

## NTCP Rabbit pAb (AR20112)

### Key Features

Host Species:	Rabbit
Reactivity:	Human,Mouse,Rat
Applications:	WB,IHC,IF,ELISA
Isotype:	IgG
MW:	38kD (Observed)

### Recommended Dilution Ratios

WB:	1:500-2000
IHC:	1:100-300
IF:	1:100-300
ELISA:	1:20000
Storage	-15°C to -25°C/1 year (Do not lower than -25°C)

### Basic Information

Clonality	Polyclonal
-----------	------------

### Immunogen Information

Specificity	NTCP Polyclonal Antibody detects endogenous levels of NTCP protein.
-------------	---

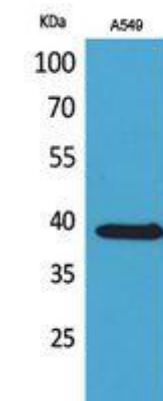
### Target Information

Gene name	SLC10A1
Protein Name	Sodium/bile acid cotransporter

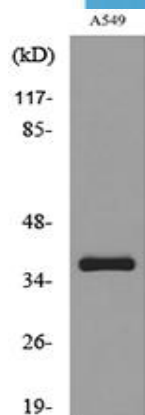
Organism	Gene ID	UniProt ID
Human	6554	Q14973
Mouse		O08705

Cellular Localization	Cell membrane ; Multi-pass membrane protein.
Tissue specificity	Brain,Liver

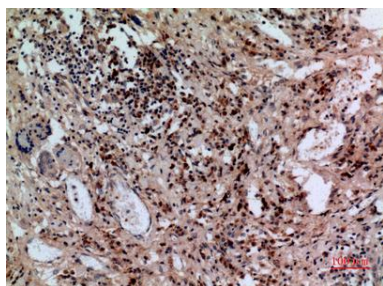
## Validation Data



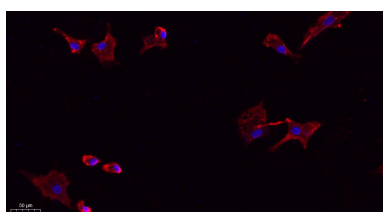
Western Blot analysis of A549 cells using NTCP Polyclonal Antibody. Secondary antibody was diluted at 1:20000



Western blot analysis of lysate from A549 cells, using SLC10A1 Antibody.



Immunohistochemical analysis of paraffin-embedded human-lung, antibody was diluted at 1:100



Immunofluorescence analysis of A549.

1, primary Antibody (red) was diluted at 1:200 (4°C overnight).

2, Goat Anti Rabbit IgG (H&L) - Alexa Fluor 594 Secondary antibody was diluted at 1:1000 (room temperature, 50min).

3, DAPI (blue) 10min.

For Research Use Only