

CYP7A1 Mouse mAb (AM10026)

Key Features

Host Species:	Mouse
Reactivity:	Human,Goldenhamster
Applications:	WB
MW:	58kD (Calculated)

Recommended Dilution Ratios

WB:	1:1000-2000
-----	-------------

Storage

-15°C to -25°C/1 year (Do not lower than -25°C)

Basic Information

Clonality	Monoclonal
-----------	------------

Immunogen Information

Specificity	CYP7A1 Monoclonal Antibody detects endogenous levels of CYP7A1 protein.
-------------	---

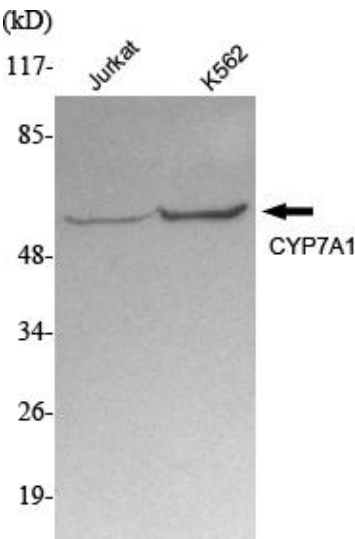
Target Information

Gene name	CYP7A1
Protein Name	Cholesterol 7-alpha-monooxygenase

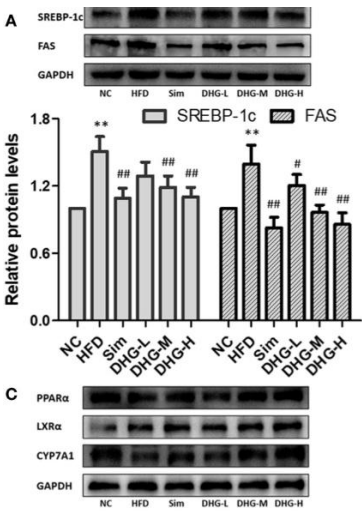
Organism	Gene ID	UniProt ID
Human	1581	P22680
Mouse		Q64505

Cellular Localization	Endoplasmic reticulum membrane ; Single-pass membrane protein . Microsome membrane ; Single-pass membrane protein .
Tissue specificity	Detected in liver.

Validation Data



Western Blot analysis using CYP7A1 Monoclonal Antibody against Jurkat, K562 cell lysate.



Chen, Kuikui, et al. "Investigation of the lipid-lowering mechanisms and active ingredients of Danhe granule on hyperlipidemia based on systems pharmacology." Frontiers in pharmacology 11 (2020): 528.

For Research Use Only