

Topoisomerase II α Rabbit pAb (AR20115)

Key Features

Host Species:	Rabbit
Reactivity:	Human,Monkey
Applications:	WB,IHC,IF,ELISA
Isotype:	IgG
MW:	174kD (Observed)

Recommended Dilution Ratios

WB:	1:500-2000
IHC:	1:100-300
IF:	1:200-1000
ELISA:	1:20000
Storage	-15°C to -25°C/1 year (Do not lower than -25°C)

Basic Information

Clonality	Polyclonal
-----------	------------

Immunogen Information

Specificity	Topo II α Polyclonal Antibody detects endogenous levels of Topo II α protein.
-------------	---

Target Information

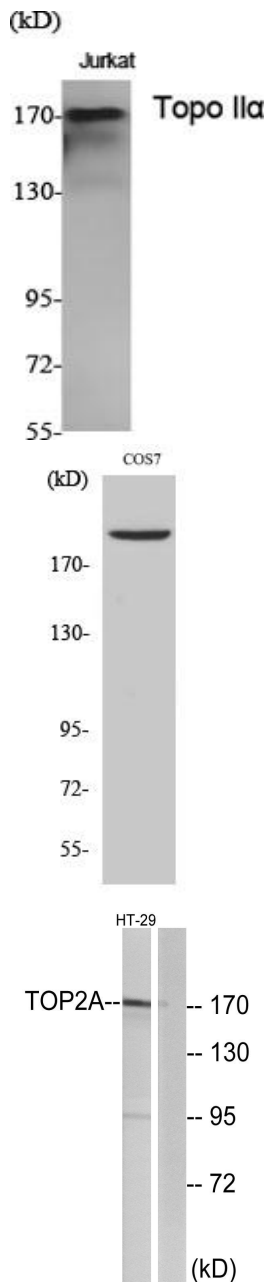
Gene name	TOP2A TOP2
Protein Name	DNA topoisomerase 2-alpha

Organism	Gene ID	UniProt ID
Human	7153	P11388
Mouse	21973	Q01320
Rat	360243	P41516;

Cellular Localization	Cytoplasm . Nucleus, nucleoplasm . Nucleus . Nucleus, nucleolus
Tissue specificity	Expressed in the tonsil, spleen, lymph node, thymus, skin, pancreas, testis, colon, kidney, liver, brain and lung (PubMed:9155056). Also

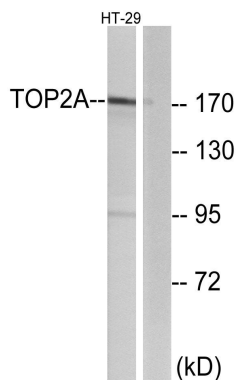
found in high-grade lymphomas, squamous cell lung tumors and seminomas (PubMed:9155056).

Validation Data

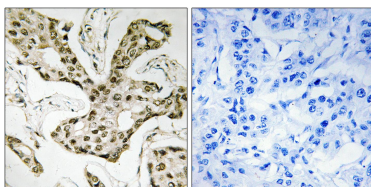


Western Blot analysis of various cells using Topo IIα Polyclonal Antibody diluted at 1:1000. Secondary antibody was diluted at 1:20000

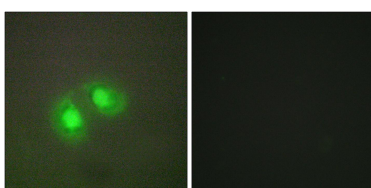
Western Blot analysis of 293 cells using Topo IIα Polyclonal Antibody diluted at 1:1000. Secondary antibody was diluted at 1:20000



Western blot analysis of lysates from HT-29 cells, using TOP2A Antibody. The lane on the right is blocked with the synthesized peptide.



Immunohistochemistry analysis of paraffin-embedded human liver carcinoma tissue, using TOP2A Antibody. The picture on the right is blocked with the synthesized peptide.



Immunofluorescence analysis of A549 cells, using TOP2A Antibody. The picture on the right is blocked with the synthesized peptide.

For Research Use Only