

MRP2 Rabbit pAb (AR20109)

Key Features

Host Species:	Rabbit
Reactivity:	Human, Mouse, Rat
Applications:	WB, ELISA
Isotype:	IgG
MW:	175kD (Calculated) 190-250kD (Observed)

Recommended Dilution Ratios

WB:	1:500-2000
ELISA:	1:10000
Storage	-15°C to -25°C/1 year (Do not lower than -25°C)

Basic Information

Clonality	Polyclonal
-----------	------------

Immunogen Information

Specificity	MRP2 Polyclonal Antibody detects endogenous levels of MRP2 protein.
-------------	---

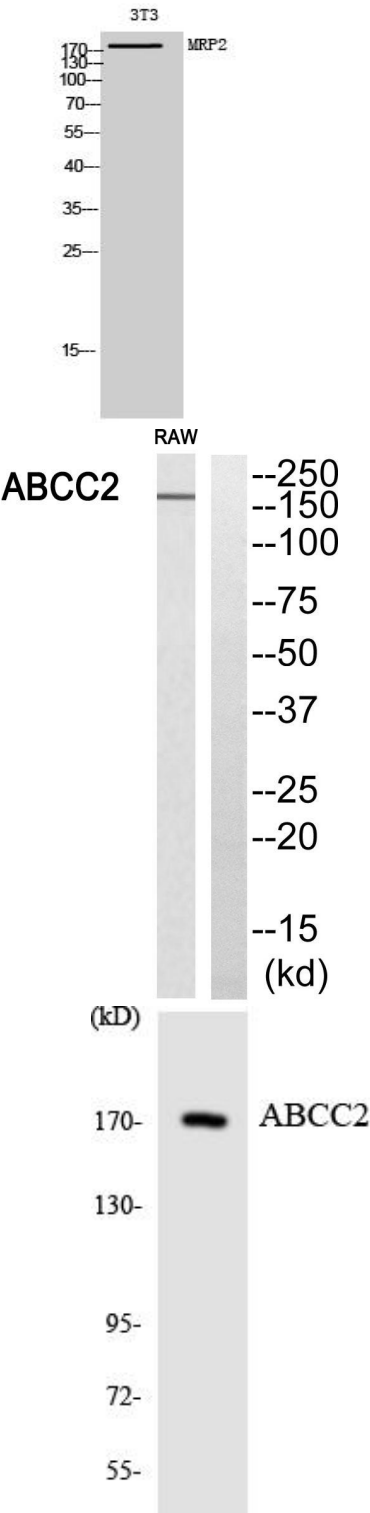
Target Information

Gene name	ABCC2
Protein Name	Canalicular multispecific organic anion transporter 1

Organism	Gene ID	UniProt ID
Human	1244	Q92887
Mouse		Q8VI47

Cellular Localization	Apical cell membrane ; Multi-pass membrane protein .
Tissue specificity	Expressed by polarized cells in liver, kidney and intestine. The highest expression is found in liver.

Validation Data



Western Blot analysis of 3T3 cells using MRP2 Polyclonal Antibody diluted at 1:1000

Western blot analysis of ABCC2 Antibody. The lane on the right is blocked with the ABCC2 peptide.

Western blot analysis of the lysates from HeLa cells using ABCC2 antibody.

For Research Use Only