

MRP3 Rabbit pAb (AR20110)

Key Features

Host Species:	Rabbit
Reactivity:	Human, Mouse, Rat
Applications:	WB, IHC
Isotype:	IgG
MW:	170kD (Observed)

Recommended Dilution Ratios

WB:	1:500-2000
IHC:	1:50-300
Storage	-15°C to -25°C/1 year (Do not lower than -25°C)

Basic Information

Clonality	Polyclonal
-----------	------------

Immunogen Information

Specificity	MRP3 Polyclonal Antibody detects endogenous levels of MRP3 protein
-------------	--

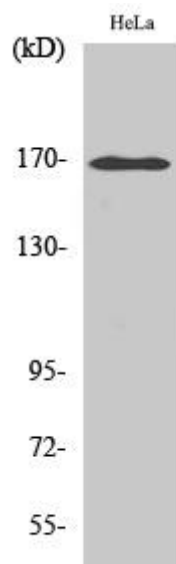
Target Information

Gene name	ABCC3
Protein Name	Canalicular multispecific organic anion transporter 2

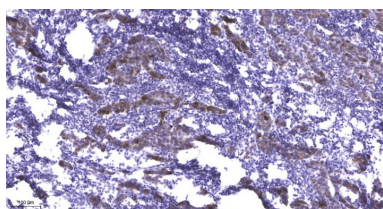
Organism	Gene ID	UniProt ID
Human	8714	O15438
Mouse		B2RX12

Cellular Localization	Basolateral cell membrane ; Multi-pass membrane protein .
Tissue specificity	Mainly expressed in the liver. Also expressed in small intestine, colon, prostate, testis, brain and at a lower level in the kidney.

Validation Data



Western Blot analysis of HepG2 cells using MRP3 Polyclonal Antibody diluted at 1:2000



Immunohistochemical analysis of paraffin-embedded human Breast cancer.

1, Antibody was diluted at 1:200(4° overnight).

2, Tris-EDTA,pH9.0 was used for antigen retrieval.

3,Secondary antibody was diluted at 1:200(room temperature, 45min).

For Research Use Only