

TGR5 Rabbit pAb (AR20113)

Key Features

Host Species:	Rabbit
Reactivity:	Human,Mouse,Rat
Applications:	WB,IHC,ELISA
Isotype:	IgG
MW:	35kD (Calculated)

Recommended Dilution Ratios

WB:	1:500-2000
IHC:	1:50-300
ELISA:	1:2000-20000
Storage:	-15°C to -25°C/1 year (Do not lower than -25°C)

Basic Information

Clonality	Polyclonal
-----------	------------

Immunogen Information

Specificity	TGR5 Polyclonal Antibody detects endogenous levels of TGR5 protein.
-------------	---

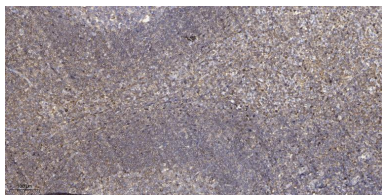
Target Information

Gene name	GPBAR1
Protein Name	G-protein coupled bile acid receptor 1

Organism	Gene ID	UniProt ID
Human	151306	Q8TDU6
Mouse		Q80SS6

Cellular Localization	Cell membrane ; Multi-pass membrane protein Ubiquitously expressed. Expressed at higher level in spleen and placenta. Expressed at lower level in other tissues. In digestive tissues, it is expressed in stomach, duodenum, ileocecum, ileum, jejunum, ascending colon, transverse colon, descending colon, cecum and liver, but not in esophagus and rectum.
Tissue specificity	

Validation Data



Immunohistochemical analysis of paraffin-embedded human tonsil.

1, Antibody was diluted at 1:200(4° overnight).

2, Tris-EDTA,pH9.0 was used for antigen retrieval.

3,Secondary antibody was diluted at 1:200(room temperature, 45min).

For Research Use Only