

## ABCG5 Rabbit pAb (AR20114)

### Key Features

Host Species:	Rabbit
Reactivity:	Human,Mouse,Rat
Applications:	WB,IF,ELISA
Isotype:	IgG
MW:	71kD (Observed)

### Recommended Dilution Ratios

WB:	1:500-2000
IF:	1:100-300
ELISA:	1:5000
Storage	-15°C to -25°C/1 year (Do not lower than -25°C)

### Basic Information

Clonality	Polyclonal
-----------	------------

### Immunogen Information

Specificity	ABCG5 Polyclonal Antibody detects endogenous levels of protein.
-------------	---

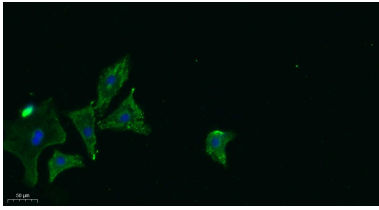
### Target Information

Gene name	ABCG5
Protein Name	ATP-binding cassette sub-family G member 5 (Sterolin-1)

Organism	Gene ID	UniProt ID
Human	64240	Q9H222
Mouse		Q99PE8
Rat		Q99PE7

Cellular Localization	Cell membrane ; Multi-pass membrane protein . Apical cell membrane ; Multi-pass membrane protein .
Tissue specificity	Strongly expressed in the liver, lower levels in the small intestine and colon.

## Validation Data



Immunofluorescence analysis of A549.

1, primary Antibody was diluted at 1:200(4°C overnight).

2, Goat Anti Rabbit IgG (H&L) - Alexa Fluor 488 Secondary antibody was diluted at 1:1000(room temperature, 50min).

3, DAPI(blue) 10min.

For Research Use Only