

## CCL28 Rabbit pAb (AR20107)

### Key Features

Host Species:	Rabbit
Reactivity:	Human, Mouse
Applications:	WB, ELISA
Isotype:	IgG
MW:	13kD (Observed)

### Recommended Dilution Ratios

WB:	1:500-2000
ELISA:	1:5000-20000
Storage	-15°C to -25°C/1 year (Do not lower than -25°C)

### Basic Information

Clonality	Polyclonal
-----------	------------

### Immunogen Information

Specificity	CCL28 Polyclonal Antibody detects endogenous levels of protein.
-------------	---

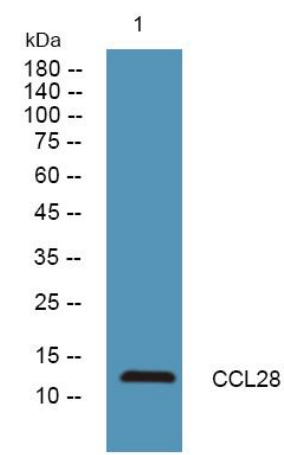
### Target Information

Gene name	CCL28 SCYA28
Protein Name	C-C motif chemokine 28 (Mucosae-associated epithelial chemokine) (MEC) (Protein CCK1) (Small-inducible cytokine A28)

Organism	Gene ID	UniProt ID
Human	56477	Q9NRJ3
Mouse		Q9JIL2

Cellular Localization	Secreted.
Tissue specificity	Preferentially expressed by epithelial cells of diverse tissues including normal and pathological colon, salivary gland, mammary gland, trachea and rectum. Also found in prostate, spleen, thyroid, psoriasis skin and in lower levels in peripheral blood leukocytes, small intestine, Peyer patches, stomach and normal skin.

Validation Data



Western blot analysis of lysates from K562 cells, primary antibody was diluted at 1:1000, 4°over night

For Research Use Only