

SOD3 Rabbit pAb (AR20106)

Key Features

Host Species:	Rabbit
Reactivity:	Human, Mouse, Rat
Applications:	WB, IHC, ELISA
Isotype:	IgG
MW:	26kD (Calculated)

Recommended Dilution Ratios

WB:	1:500-2000
IHC:	1:50-300
ELISA:	1:2000-20000
Storage	-15°C to -25°C/1 year (Do not lower than -25°C)

Basic Information

Clonality	Polyclonal
-----------	------------

Immunogen Information

Specificity	This antibody detects endogenous levels of SODE at Human/Mouse/Rat
-------------	--

Target Information

Gene name	SOD3
Protein Name	SODE

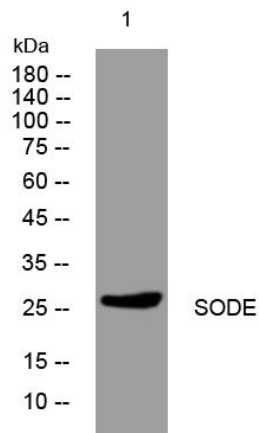
Organism	Gene ID	UniProt ID
Human	6649	P08294
Mouse	20657	O09164
Rat	25352	Q08420

Cellular Localization	Secreted, extracellular space. Golgi apparatus, trans-Golgi network . 99% of EC-SOD is anchored to heparan sulfate proteoglycans in the tissue interstitium, and 1% is located in the vasculature in equilibrium between the plasma and the endothelium.
-----------------------	--

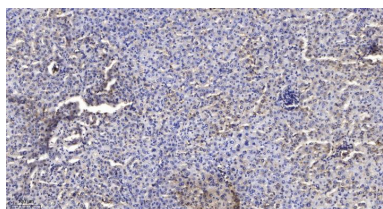
Tissue specificity

Expressed in blood vessels, heart, lung, kidney and placenta. Major SOD isoenzyme in extracellular fluids such as plasma, lymph and synovial fluid.

Validation Data



Western blot analysis of lysates from HpeG2 cells, primary antibody was diluted at 1:1000, 4°over night



Immunohistochemical analysis of paraffin-embedded human liver cancer.

1, Antibody was diluted at 1:200(4° overnight).

2, Tris-EDTA,pH9.0 was used for antigen retrieval.

3,Secondary antibody was diluted at 1:200(room temperature, 45min).

For Research Use Only