

## Versican Rabbit pAb (AR20104)

### Key Features

Host Species:	Rabbit
Reactivity:	Human, Mouse, Rat
Applications:	WB, IHC, IF, ELISA
Isotype:	IgG
MW:	373kDa (Calculated)

### Recommended Dilution Ratios

WB:	1:500-2000
IHC:	1:100-300
IF:	1:50-200
ELISA:	1:10000
Storage	-15°C to -25°C/1 year (Do not lower than -25°C)

### Basic Information

Clonality	Polyclonal
-----------	------------

### Immunogen Information

Specificity	Versican Polyclonal Antibody detects endogenous levels of Versican protein.
-------------	---

### Target Information

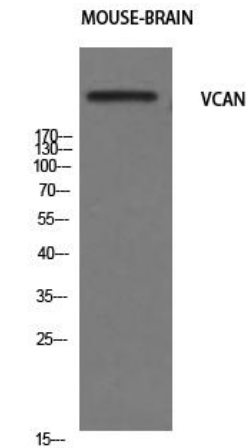
Gene name	VCAN
Protein Name	Versican core protein

Organism	Gene ID	UniProt ID
Human	1462	P13611
Mouse		Q62059

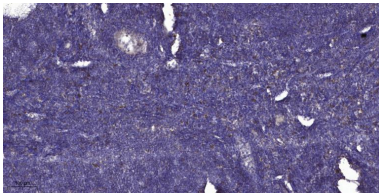
Cellular Localization	Secreted, extracellular space, extracellular matrix . Cell projection, cilium, photoreceptor outer segment . Secreted, extracellular space, extracellular matrix, interphotoreceptor matrix .
Tissue specificity	Expressed in the retina (at protein level) (PubMed:29777959).

Cerebral white matter and plasma (PubMed:2469524). Isoform V0: Expressed in normal brain, gliomas, medulloblastomas, schwannomas, neurofibromas, and meningiomas (PubMed:8627343). Isoform V1: Expressed in normal brain, gliomas, medulloblastomas, schwannomas, neurofibromas, and meningiomas (PubMed:8627343). Isoform V2: Restricted to normal brain and gliomas (PubMed:8627343). Isoform V3: Found in all these tissues except medulloblastomas (PubMed:8627343).

## Validation Data



Western Blot analysis of mouse-brain cells using Versican Polyclonal Antibody. Secondary antibody was diluted at 1:20000



Immunohistochemical analysis of paraffin-embedded human tonsil.  
1, Antibody was diluted at 1:200(4° overnight).  
2, Tris-EDTA,pH9.0 was used for antigen retrieval.  
3,Secondary antibody was diluted at 1:200(room temperature, 30min).

For Research Use Only