

PLZF Rabbit mAb (AR1995)

Key Features

Host Species:	Rabbit
Reactivity:	Human
Applications:	WB,IF,ELISA
Isotype:	IgG,Kappa
MW:	74kDa (Calculated) 80kDa (Observed)

Recommended Dilution Ratios

WB:	1:1000-5000
IF:	1:200-1000
ELISA:	1:5000-20000

Storage

-15°C to -25°C/1 year (Do not lower than -25°C)

Basic Information

Clonality	Monoclonal
-----------	------------

Immunogen Information

Specificity	Endogenous
-------------	------------

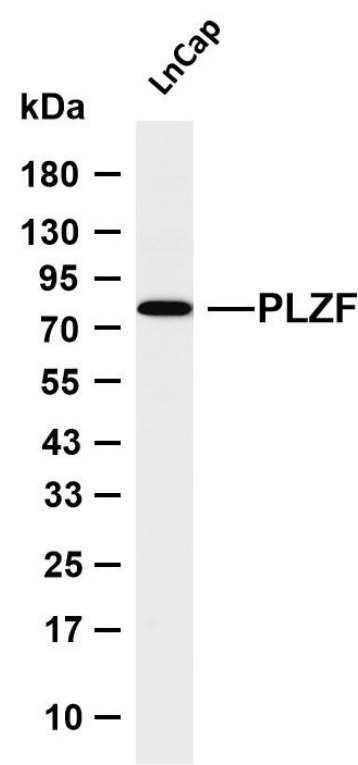
Target Information

Gene name	ZBTB16
Protein Name	Zinc finger and BTB domain-containing protein 16

Organism	Gene ID	UniProt ID
Human	7704	Q05516

Cellular Localization	Nucleus. Nucleus, nuclear body.
Tissue specificity	Within the hematopoietic system, PLZF is expressed in bone marrow, early myeloid cell lines and peripheral blood mononuclear cells. Also expressed in the ovary, and at lower levels, in the kidney and lung.

Validation Data



Various whole cell lysates were separated by 4-20% SDS-PAGE, and the membrane was blotted with anti-PLZF antibody. The HRP-conjugated Goat anti-Rabbit IgG (H + L) antibody was used to detect the antibody.

Lane 1: LnCap

Predicted band size: 74kDa

Observed band size: 80kDa

For Research Use Only