

WEE1 Rabbit mAb (AR1993)

Key Features

Host Species:	Rabbit
Reactivity:	Human, Mouse, Rat
Applications:	WB, IHC, IF, IP, ELISA
Isotype:	IgG, Kappa
MW:	72kDa (Calculated) 95kDa (Observed)

Recommended Dilution Ratios

IHC:	1:100-200
WB:	1:2000-10000
IF:	1:200-1000
ELISA:	1:5000-20000
IP:	1:50-200

Storage

-15°C to -25°C/1 year (Do not lower than -25°C)

Basic Information

Clonality	Monoclonal
-----------	------------

Immunogen Information

Specificity	Endogenous
-------------	------------

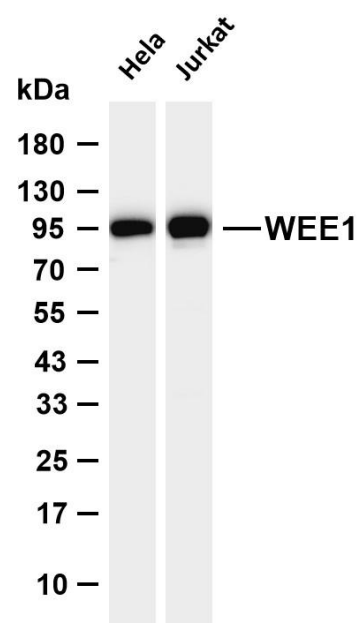
Target Information

Gene name	WEE1
Protein Name	Wee1-like protein kinase

Organism	Gene ID	UniProt ID
Human	7465	P30291
Mouse	22390	P47810
Rat	308937	Q63802

Cellular Localization	Nucleus.
Tissue specificity	Amygdala, Blood, Epithelium, Human uterus endothel primary cell culture, Placenta, Skin

Validation Data



Various whole cell lysates were separated by 4-20% SDS-PAGE, and the membrane was blotted with anti-WEE1 antibody. The HRP conjugated Goat anti-Rabbit IgG (H + L) antibody was used to detect the antibody.

Lane 1: HeLa

Lane 2: Jurkat

Predicted band size: 72kDa

Observed band size: 95kDa

For Research Use Only