

cPLA2 Rabbit mAb (AR1992)

Key Features

Host Species:	Rabbit
Reactivity:	Human, Mouse
Applications:	WB, IF, IP, ELISA
Isotype:	IgG, Kappa
MW:	85kDa (Calculated) 95kDa (Observed)

Recommended Dilution Ratios

WB:	1:2000-10000
IF:	1:200-1000
ELISA:	1:5000-20000
IP:	1:50-200

Storage

-15°C to -25°C/1 year (Do not lower than -25°C)

Basic Information

Clonality	Monoclonal
-----------	------------

Immunogen Information

Specificity	Endogenous
-------------	------------

Target Information

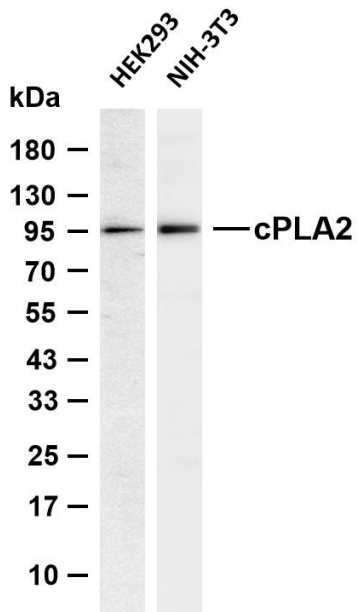
Gene name	PLA2G4A
Protein Name	Cytosolic phospholipase A2

Organism	Gene ID	UniProt ID
Human	5321	P47712
Mouse	18783	P47713
Rat		P50393

Cellular Localization	Cytoplasm. Golgi apparatus membrane. Nucleus envelope. Translocates to intracellular membranes in a calcium-dependent way.
Tissue specificity	Expressed in various cells and tissues such as macrophages, neutrophils, fibroblasts and lung endothelium. Expressed in

platelets (at protein level) (PubMed:25102815).

Validation Data



Various whole cell lysates were separated by 4-20% SDS-PAGE, and the membrane was blotted with anti-cPLA2 antibody. The HRP-conjugated Goat anti Rabbit IgG (H + L) antibody was used to detect the antibody.

Lane 1: HEK293

Lane 2: NIH-3T3

Predicted band size: 85kDa

Observed band size: 95kDa

For Research Use Only