

SRF Rabbit mAb (AR1991)

Key Features

Host Species:	Rabbit
Reactivity:	Human,Mouse,Rat
Applications:	WB,IF,IP,ELISA
Isotype:	IgG,Kappa
MW:	52kDa (Calculated) 67kDa (Observed)

Recommended Dilution Ratios

WB:	1:2000-10000
IF:	1:200-1000
ELISA:	1:5000-20000
IP:	1:50-200

Storage

-15°C to -25°C/1 year (Do not lower than -25°C)

Basic Information

Clonality	Monoclonal
-----------	------------

Immunogen Information

Specificity	Endogenous
-------------	------------

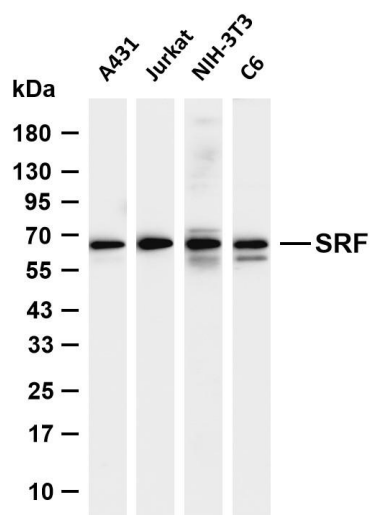
Target Information

Gene name	SRF
Protein Name	Serum response factor

Organism	Gene ID	UniProt ID
Human	6722	P11831
Mouse	20807	Q9JLM73

Cellular Localization	Nucleus
Tissue specificity	Brain,Epithelium,Lung,Lymph

Validation Data



Various whole cell lysates were separated by 4-20% SDS-PAGE, and the membrane was blotted with anti-SRF antibody. The HRP conjugated Goat anti-Rabbit IgG (H + L) antibody was used to detect the antibody.

Lane 1: A431

Lane 2: Jurkat

Lane 3: NIH-3T3

Lane 4: C6

Predicted band size: 52kDa

Observed band size: 67kDa

For Research Use Only