

## IKK $\alpha/\beta$ Rabbit mAb(AR1236)

### Key Features

Host Species:	Rabbit
Reactivity:	Human,Mouse,Rat
Applications:	WB,IHC,IF,IP,ELISA
Isotype:	IgG,Kappa
MW:	86kD (Calculated) 86kD (Observed)

### Recommended Dilution Ratios

IHC:	1:500-2000
WB:	1:1000-5000
IF:	1:200-1000
ELISA:	1:5000-20000
IP:	1:50-200

### Storage

-15°C to -25°C/1 year (Do not lower than -25°C)

### Basic Information

Clonality	Monoclonal
-----------	------------

### Immunogen Information

Specificity	Endogenous
-------------	------------

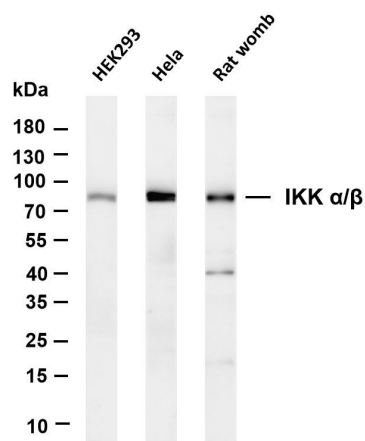
### Target Information

Gene name	CHUK/IKBKB
Protein Name	Inhibitor of nuclear factor kappa-B kinase subunit alpha

Organism	Gene ID	UniProt ID
Human	1147; 3551	O15111; O14920
Mouse	16150	
Rat	84351	Q9QY78

Cellular Localization	Cytoplasm, Nucleus
Tissue specificity	Widely expressed.

## Validation Data



Various whole cell lysates were separated by 4-20% SDS-PAGE, and the membrane was blotted with anti-IKK  $\alpha/\beta$  antibody. The HRP conjugated Goat anti-Rabbit IgG(H + L) antibody was used to detect the antibody.

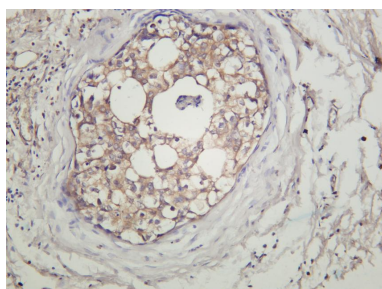
Lane 1: HEK293

Lane 2: Hela

Lane 3: Rat womb

Predicted band size: 86kDa

Observed band size: 86kDa



Human breast carcinoma was stained with anti-IKK  $\alpha/\beta$  rabbit antibody

For Research Use Only