

CD16/CD32 Rabbit mAb (AR2264)

Key Features

Host Species:	Rabbit
Reactivity:	Mouse
Applications:	WB,IHC,IF,ELISA
Isotype:	IgG,Kappa
MW:	37,30 kD (Calculated) 50-55 kD (Observed)

Recommended Dilution Ratios

IHC:	1:200-1000
WB:	1:2000-10000
IF:	1:200-1000
ELISA:	1:5000-20000

Storage

-15°C to -25°C/1 year (Do not lower than -25°C)

Basic Information

Clonality	Monoclonal
-----------	------------

Immunogen Information

Specificity	Endogenous
-------------	------------

Target Information

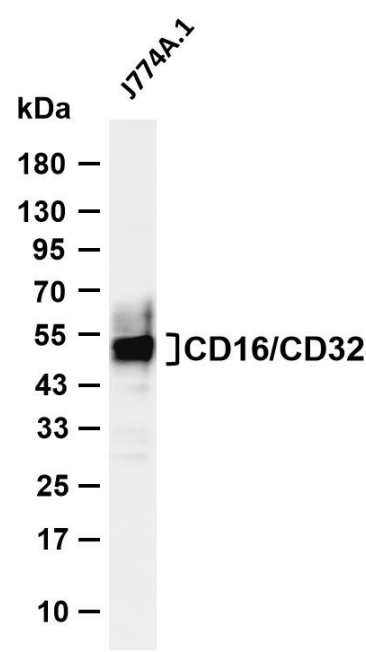
Gene name	FCGR3A/FCGR2B
Protein Name	Low affinity immunoglobulin gamma Fc region receptor III-A/Low affinity immunoglobulin gamma Fc region receptor II-b

Organism	Gene ID	UniProt ID
Mouse	14130	P08101; P08508

Cellular Localization	Cell membrane ; Single-pass type I membrane protein;Isoform IIB1;Cytoplasm, cytoskeleton.[Note: Binds the cytoskeleton and is not localized in endocytotic pits];Isoform IIB3.Secreted.[Note: Released as a soluble molecule].
Tissue specificity	Widely expressed by cells of hemopoietic origin. The isoforms are differentially expressed. Isoform IIB1 is preferentially expressed by cells of the lymphoid lineage, isoform IIB2 by cells of the myeloid

lineage, and isoform IIB3 is released by macrophages and is present in the serum. Isoform IIB1' is expressed in myeloid and lymphoid cell lines, in normal spleen cells, and in resting or LPS-activated B-cells but is not detected in mesenteric lymph node cells.

Validation Data

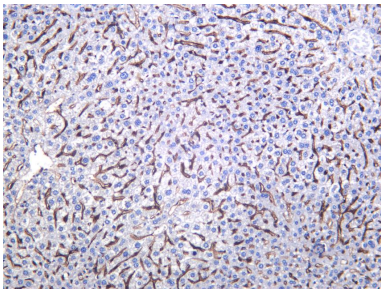


Various whole cell lysates were separated by 4-20% SDS-PAGE, and the membrane was blotted with anti-CD16/CD32 antibody. The HRP conjugated Goat anti-Rabbit IgG (H + L) antibody was used to detect the antibody.

Lane 1: J774A.1

Predicted band size: 37,30kDa

Observed band size: 50-55kDa



Mouse liver was stained with anti-CD16/CD32 Rabbit antibody

For Research Use Only