

SRGN Rabbit pAb (AR20103)

Key Features

Host Species:	Rabbit
Reactivity:	Human, Mouse, Rat
Applications:	WB
Isotype:	IgG
MW:	17kDa (Calculated)

Recommended Dilution Ratios

WB:	1:500-2000
Storage	-15°C to -25°C/1 year (Do not lower than -25°C)

Basic Information

Clonality	Polyclonal
-----------	------------

Immunogen Information

Specificity	This antibody detects endogenous levels of SRGN at Human/Mouse/Rat
-------------	--

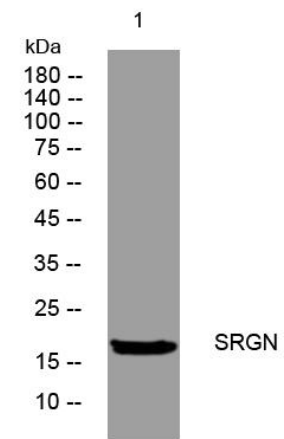
Target Information

Gene name	SRGN PRG PRG1
Protein Name	SRGN

Organism	Gene ID	UniProt ID
Human	5552	P10124
Mouse	19073	P13609
Rat	56782	P04917

Cellular Localization	Cytoplasmic granule . Cytolytic granule . Secreted, extracellular space . Golgi apparatus . Found in mast cell granules and in cytoplasmic granules of cytolytic T lymphocytes from where it is secreted upon cell activation (By similarity). Secreted constitutively by endothelial cells and macrophages (PubMed:11154222). Located to Golgi apparatus during neutrophil differentiation (PubMed:15136585).
-----------------------	--

Validation Data



Western blot analysis of lysates from VEC cells, primary antibody was diluted at 1:1000, 4° over night

For Research Use Only