

STC2 Rabbit pAb (AR20101)

Key Features

Host Species:	Rabbit
Reactivity:	Human, Mouse, Rat
Applications:	WB, ELISA
Isotype:	IgG
MW:	33kDa (Observed)

Recommended Dilution Ratios

WB:	1:500-2000
ELISA:	1: 5000-20000
Storage	-15°C to -25°C/1 year (Do not lower than -25°C)

Basic Information

Clonality	Polyclonal
-----------	------------

Immunogen Information

Specificity	STC2 Polyclonal Antibody detects endogenous levels of protein.
-------------	--

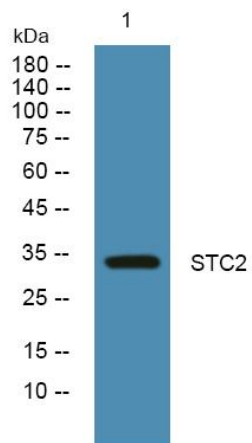
Target Information

Gene name	STC2
Protein Name	Stanniocalcin-2 (STC-2) (Stanniocalcin-related protein) (STC-related protein) (STCRP)

Organism	Gene ID	UniProt ID
Human	8614	O76061
Mouse		O88452
Rat		Q9R0K8

Cellular Localization	Secreted .
Tissue specificity	Expressed in a variety of tissues including muscle, heart, pancreas, kidney, spleen, prostate, small intestine, colon and peripheral blood leukocytes.

Validation Data



Western blot analysis of lysates from SH-SY5Y cells, primary antibody was diluted at 1:1000, 4° over night

For Research Use Only