

# IGF-IR Receptor $\beta$ Rabbit mAb (AR2056)

## Key Features

Host Species:	Rabbit
Reactivity:	Human, Mouse, Rat
Applications:	WB, IF, IP, ELISA
Isotype:	IgG,Kappa
MW:	154 kD (Calculated) 95kD (Observed)

## Recommended Dilution Ratios

WB:	1:2000-10000
IF:	1:200-1000
IP:	1:50-200
ELISA:	1:5000-20000

## Storage

-15°C to -25°C/1 year (Do not lower than -25°C)

## Basic Information

Clonality	Monoclonal
-----------	------------

## Immunogen Information

Specificity	Endogenous
-------------	------------

## Target Information

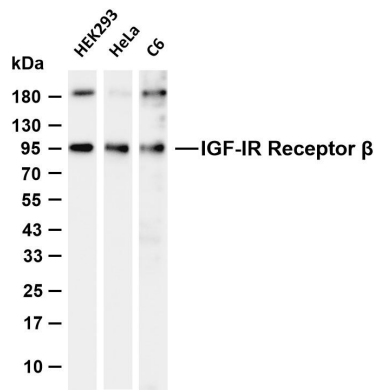
Gene name	IGF1R
Protein Name	Insulin-like growth factor 1 receptor

Organism	Gene ID	UniProt ID
Human	3480	P08069
Mouse	16001	Q60751
Rat	25718	P24062

Cellular Localization	Cell membrane ; Single-pass type I membrane protein .
Tissue specificity	Found as a hybrid receptor with INSR in muscle, heart, kidney, adipose tissue, skeletal muscle, hepatoma, fibroblasts, spleen and placenta (at protein level). Expressed in a variety of tissues.

Overexpressed in tumors, including melanomas, cancers of the colon, pancreas prostate and kidney

### Validation Data



Various whole cell lysates were separated by 4-20% SDS-PAGE, and the membrane was blotted with anti-IGF-IR Receptor  $\beta$  antibody. The HRP-conjugated Goat anti-Rabbit IgG (H + L) antibody was used to detect the antibody.

Lane 1: HEK293

Lane 2: HeLa

Lane 3: C6

Predicted band size: 154kDa

Observed band size: 95kDa

For Research Use Only