

CD11c Rabbit mAb (AR1769)

Key Features

Host Species:	Rabbit
Reactivity:	Human
Applications:	WB,IHC,IF,IP,ELISA
Isotype:	IgG,Kappa
MW:	128kDa (Calculated) 145kDa (Observed)

Recommended Dilution Ratios

IHC:	1:200-1000
WB:	1:2000-10000
IF:	1:200-1000
ELISA:	1:5000-20000
IP:	1:50-200

Storage

-15°C to -25°C/1 year (Do not lower than -25°C)

Basic Information

Clonality	Monoclonal
-----------	------------

Immunogen Information

Specificity	Endogenous
-------------	------------

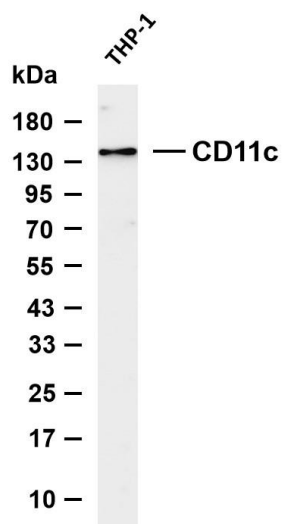
Target Information

Gene name	ITGAX CD11C
Protein Name	Integrin alpha-X (CD11 antigen-like family member C) (Leu M5) (Leukocyte adhesion glycoprotein p150,95 alpha chain) (Leukocyte adhesion receptor p150,95) (CD antigen CD11c)

Organism	Gene ID	UniProt ID
Human	3687	P20702
Mouse	16411	Q9QXH4

Cellular Localization	Membrane; Single-pass type I membrane protein.
Tissue specificity	Predominantly expressed in monocytes and granulocytes.

Validation Data

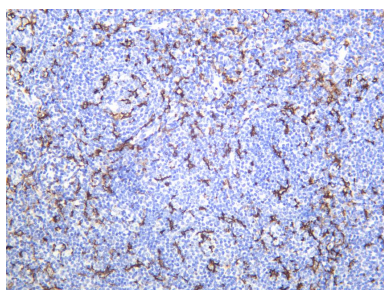


Various whole cell lysates were separated by 4-20% SDS-PAGE, and the membrane was blotted with anti-CD11c antibody. The HRP-conjugated Goat anti-Rabbit IgG (H + L) antibody was used to detect the antibody.

Lane 1: THP-1

Predicted band size: 128kDa

Observed band size: 145kDa



Human tonsil was stained with anti-CD11c Rabbit antibody.

For Research Use Only