

Vimentin Rabbit mAb (AR1266)

Key Features

Host Species:	Rabbit
Reactivity:	Human,Mouse,Rat
Applications:	WB,IHC,IF,ELISA
Isotype:	IgG,Kappa
MW:	54kD (Calculated) 54kD (Observed)

Recommended Dilution Ratios

IHC:	1:1000-5000
WB:	1:1000-5000
IF:	1:200-1000
ELISA:	1:5000-20000

Storage

-15°C to -25°C/1 year (Do not lower than -25°C)

Basic Information

Clonality	Monoclonal
-----------	------------

Immunogen Information

Specificity	Endogenous
-------------	------------

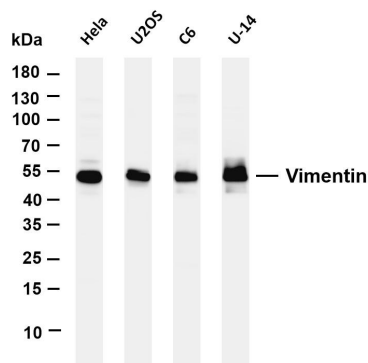
Target Information

Gene name	VIM
Protein Name	Vimentin

Organism	Gene ID	UniProt ID
Human	7431	P08670
Mouse	22352	P20152
Rat	81818	P31000

Cellular Localization	Cytoplasm
Tissue specificity	Highly expressed in fibroblasts, some expression in T- and B-lymphocytes, and little or no expression in Burkitt's lymphoma cell lines. Expressed in many hormone-independent mammary carcinoma cell lines.

Validation Data



Various whole cell lysates were separated by 4-20% SDS-PAGE, and the membrane was blotted with anti-Vimentin antibody. The HRP-conjugated Goat anti-Rabbit IgG(H + L) antibody was used to detect the antibody.

Lane1: HeLa

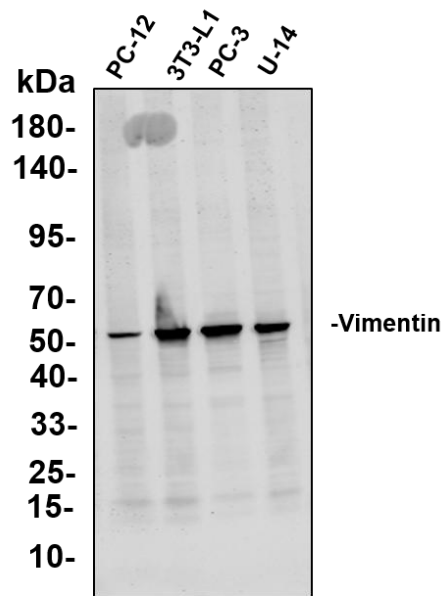
Lane 2: U2OS

Lane 3: C6

Lane 4: U-14

Predicted band size: 54kDa

Observed band size: 54kDa



Various whole cell lysates were separated by 4-20% SDS-PAGE, and the primary antibody was used at 4 °C, over night with a 1:5000 dilution . The Dylight 800-conjugated Goat anti-Rabbit antibody was used to detect the antibody.

Lane1: PC-12 - Rat adrenal pheochromocytoma

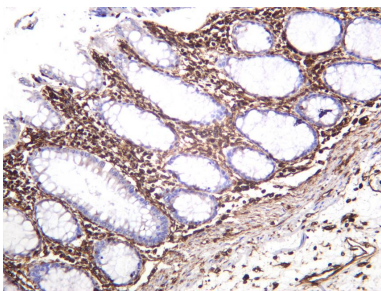
Lane2: 3T3-L1 - Mouse embryonic fibroblast

Lane3: PC-3 - Human prostate adenocarcinoma

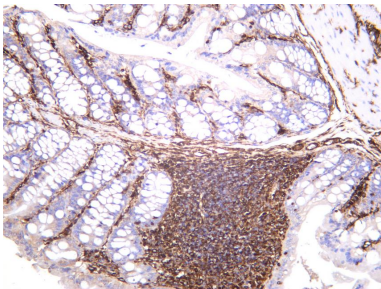
Lane4: U-14 - Mouse cervical carcinoma

Predicted band size: 54kDa

Observed band size: 54kDa

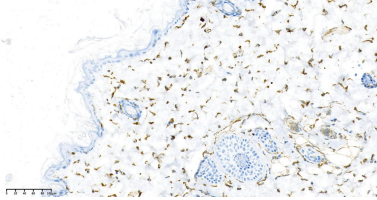
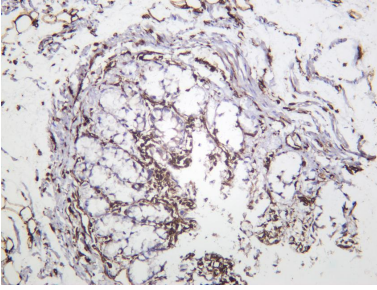


Human colon was stained with anti-Vimentin rabbit antibody

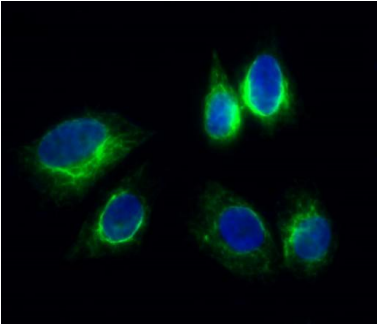


Mouse colon was stained with anti-Vimentin rabbit antibody

Rat colon was stained with anti-Vimentin rabbit antibody



Rat skin was stained with anti-Vimentin Rabbit antibody



Immunofluorescence analysis of Hela cell.

1. Vimentin Antibody(green) was diluted at 1:200(4° overnight).
2. Goat Anti Rabbit Alexa Fluor 488 was diluted at 1:1000(room temperature, 50min).
3. DAPI (blue) 10min.

For Research Use Only