

ALIX Rabbit mAb (AR1012)

Key Features

Host Species:	Rabbit
Reactivity:	Human, Mouse, Rat
Applications:	WB, IHC, IF, ELISA
Isotype:	IgG, Kappa
MW:	96kD (Calculated) 96kD (Observed)

Recommended Dilution Ratios

IHC:	1:200-1000
WB:	1:1000-5000
IF:	1:200-1000
ELISA:	1:5000-20000

Storage

-15°C to -25°C/1 year (Do not lower than -25°C)

Basic Information

Clonality	Monoclonal
-----------	------------

Immunogen Information

Specificity	Endogenous
-------------	------------

Target Information

Gene name	PDCD6IP AIP1 ALIX KIAA1375
-----------	----------------------------

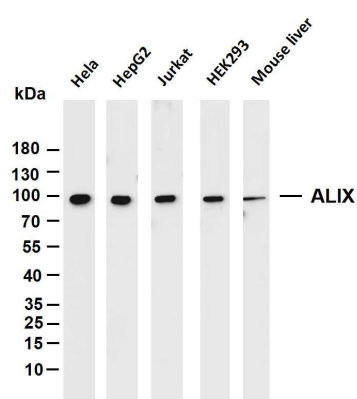
Protein Name	Alix
--------------	------

Organism	Gene ID	UniProt ID
Human	10015	Q8WUM4

Cellular Localization	Cytoplasmic
-----------------------	-------------

Tissue specificity	Brain, Lymph, Osteosarcoma, Placenta, Testis
--------------------	--

Validation Data



Various whole cell lysates were separated by 4-20% SDS-PAGE, and the membrane was blotted with anti-ALIX antibody. The HRP conjugated Goat anti-Rabbit IgG(H + L) antibody was used to detect the antibody.

Lane 1: HeLa

Lane 2: HepG2

Lane 3: Jurkat

Lane 4: HEK293

Lane 5: Mouse liver

Predicted band size: 96kDa

Observed band size: 96kDa

Various whole cell lysates were separated by 4-20% SDS-PAGE, and the primary antibody was used at 4°C, over night with a 1:2500 dilution. The Dylight 800-conjugated Goat anti-Rabbit antibody was used to detect the antibody.

Lane1: HL60 - Human promyelocytic leukemia cell

Lane2: HUVEC - Human umbilical vein endothelial cell

Lane3: Human CAF - Human cancer-associated fibroblast

Lane4: HCT116 - Human colorectal carcinoma

Lane5: A549 - Human lung carcinoma

Lane6: Jurkat - Human T lymphocyte leukemia

Lane7: HT22 - Mouse hippocampal neuronal

Lane8: Thp-1 - Human monocytic leukemia

Lane9: HK-2 - Human proximal tubular epithelial

Lane10: PC-12 - Rat adrenal pheochromocytoma

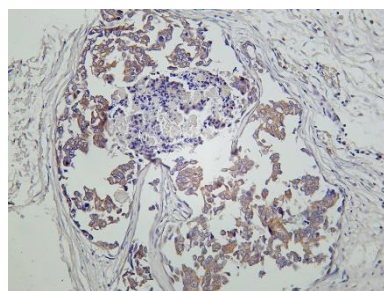
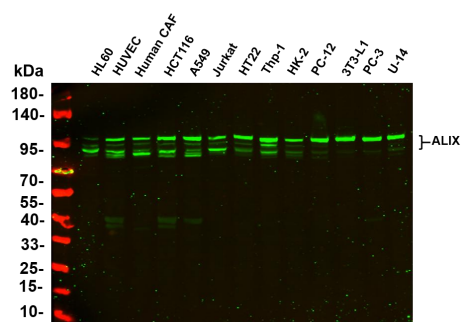
Lane11: 3T3-L1 - Mouse embryonic fibroblast

Lane12: PC-3 - Human prostate adenocarcinoma

Lane13: U-14 - Mouse cervical carcinoma

Predicted band size: 96kDa

Observed band size: 90-100kDa



Human breast carcinoma was stained with Anti-ALIX rabbit antibody