

C1QA Rabbit pAb (AR20060)

Key Features

| | |
|---------------|--------------------|
| Host Species: | Rabbit |
| Reactivity: | Human, Mouse, Rat |
| Applications: | WB, IHC, IF, ELISA |
| Isotype: | IgG |
| MW: | 26kD (Observed) |

Recommended Dilution Ratios

| | |
|--------|--------------|
| WB: | 1:500-2000 |
| IHC: | 1:50-200 |
| IF: | 1:50-200 |
| ELISA: | 1:5000-20000 |

Storage

-15°C to -25°C/1 year (Do not lower than -25°C)

Basic Information

| | |
|-----------|------------|
| Clonality | Polyclonal |
|-----------|------------|

Immunogen Information

| | |
|-------------|--|
| Specificity | C1QA Polyclonal Antibody detects endogenous levels of protein. |
|-------------|--|

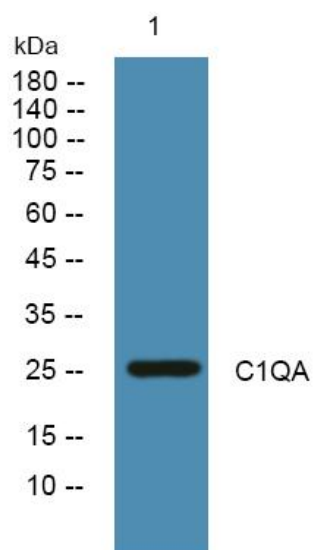
Target Information

| | |
|--------------|---------------------------------------|
| Gene name | C1QA |
| Protein Name | Complement C1q subcomponent subunit A |

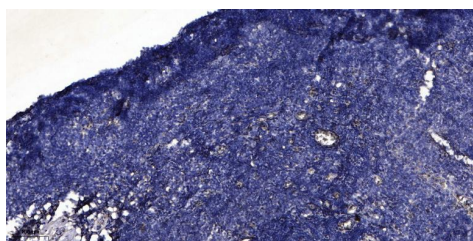
| Organism | Gene ID | UniProt ID |
|----------|---------|------------|
| Human | 712 | P02745 |
| Mouse | | P98086 |
| Rat | | P31720 |

| | |
|-----------------------|---------------------------------|
| Cellular Localization | Secreted. |
| Tissue specificity | Liver, Monocyte, Plasma, Spleen |

Validation Data



Western blot analysis of lysates from DU145 cells, primary antibody was diluted at 1:1000, 4° over night



Immunohistochemical analysis of paraffin-embedded human tonsil. 1, Antibody was diluted at 1:200(4° overnight). 2, Tris-EDTA,pH9.0 was used for antigen retrieval. 3,Secondary antibody was diluted at 1:200(room temperature, 30min).

For Research Use Only