

VGLUT1 Rabbit mAb (AR1607)

Key Features

Host Species:	Rabbit
Reactivity:	Human, Mouse, Rat
Applications:	WB, IHC, IF, IP, ELISA
Isotype:	IgG, Kappa
MW:	62kD (Calculated) 62kD (Observed)

Recommended Dilution Ratios

IHC:	1:200-1000
WB:	1:2000-10000
IF:	1:200-1000
ELISA:	1:5000-20000
IP:	1:50-200

Storage

-15°C to -25°C/1 year (Do not lower than -25°C)

Basic Information

Clonality	Monoclonal
-----------	------------

Immunogen Information

Specificity	Endogenous
-------------	------------

Target Information

Gene name	SLC17A7 BNPI VGLUT1
Protein Name	VGLU1

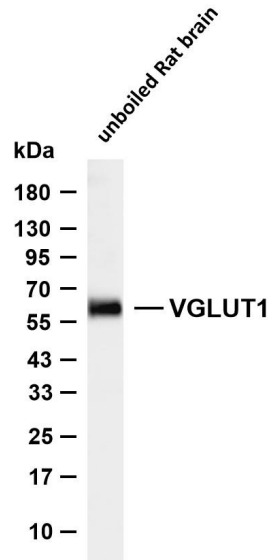
Organism	Gene ID	UniProt ID
Human	57030	Q9P2U7
Mouse	72961	Q3TXX4
Rat	116638	Q62634

Cellular Localization	Cytoplasmic vesicle, secretory vesicle, synaptic vesicle membrane . Membrane ; Multi-pass membrane protein . Cell junction, synapse, synaptosome .
-----------------------	---

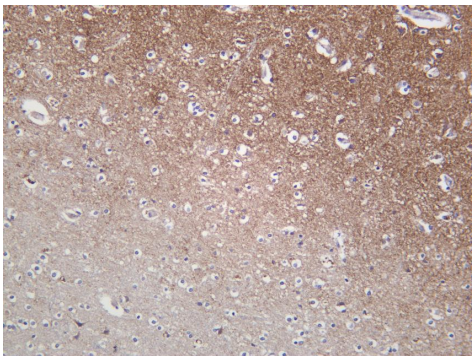
Tissue specificity

Expressed in several regions of the brain including amygdala, cerebellum, cerebral cortex, hippocampus, frontal lobe, medulla, occipital lobe, putamen and temporal lobe.

Validation Data



Various whole cell lysates were separated by 4-20% SDS-PAGE, and the membrane was blotted with anti-VGLUT1 antibody. The HRP conjugated Goat anti-Rabbit IgG (H + L) antibody was used to detect the antibody. Lane 1: unboiled Rat brain Predicted band size: 62kDa Observed band size: 62kDa



Human brain was stained with anti-VGLUT1 Rabbit antibody

For Research Use Only