

PPP1R1C Rabbit pAb (AR20059)

Key Features

Host Species:	Rabbit
Reactivity:	Human, Mouse
Applications:	IHC, IF, ELISA
Isotype:	IgG
MW:	12kD (Calculated)

Recommended Dilution Ratios

IHC:	1:100-300
IF:	1:50-200
ELISA:	1: 10000
Storage	-15°C to -25°C/1 year (Do not lower than -25°C)

Basic Information

Clonality	Polyclonal
-----------	------------

Immunogen Information

Specificity	PPP1R1C Polyclonal Antibody detects endogenous levels of PPP1R1C protein
-------------	--

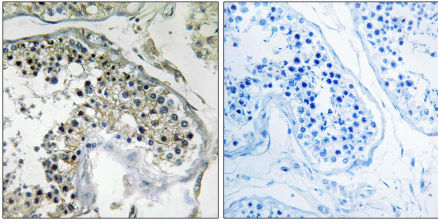
Target Information

Gene name	PPP1R1C
Protein Name	Protein phosphatase 1 regulatory subunit 1C

Organism	Gene ID	UniProt ID
Human	151242	Q8WVI7
Mouse	75276	Q8BKK4

Cellular Localization	Cytoplasm
Tissue specificity	Heart, Skeletal muscle

Validation Data



Immunohistochemistry analysis of paraffin-embedded human testis tissue, using PPP1R1C Antibody. The picture on the right is blocked with the synthesized peptide.

For Research Use Only