

INCENP (Phospho Thr59) Rabbit pAb (AR20056)

Key Features

Host Species:	Rabbit
Reactivity:	Human,Mouse,Rat
Applications:	WB
Isotype:	IgG
MW:	105kD (Calculated)

Recommended Dilution Ratios

WB:	1:500-2000
-----	------------

Storage

-15°C to -25°C/1 year (Do not lower than -25°C)

Basic Information

Clonality	Polyclonal
-----------	------------

Immunogen Information

Specificity

This antibody detects endogenous levels of INCENP (Phospho-Thr59) at Human, Mouse, Rat. The name of modified sites may be influenced by many factors, such as species (the modified site was not originally found in human samples) and the change of protein sequence (the previous protein sequence is incomplete, and the protein sequence may be prolonged with the development of protein sequencing technology). When naming, we will use the "numbers" in historical reference to keep the sites consistent with the reports. The antibody binds to the following modification sequence (lowercase letters are modification sites): PKtPS

Target Information

Gene name	INCENP
Protein Name	INCENP (Phospho-Thr59)

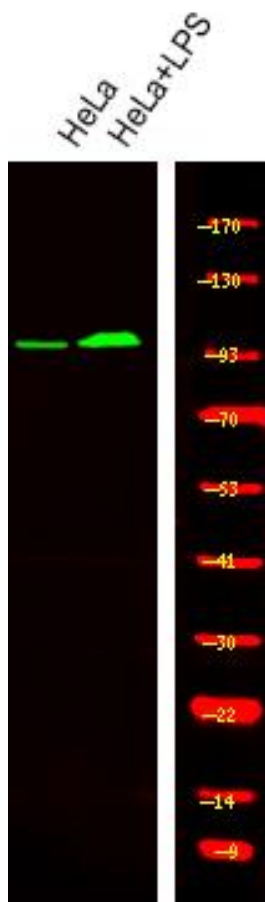
	Organism	Gene ID	UniProt ID
	Human	3619	Q9NQS7
	Mouse	16319	Q9WU62
Cellular Localization	Nucleus. Chromosome, centromere. Cytoplasm, cytoskeleton, spindle. Midbody. Chromosome, centromere, kinetochore.		

Colocalized at synaptonemal complex central element from zygotene up to late pachytene when it begins to relocate to heterochromatic chromocenters. Colocalizes with AURKB at a connecting strand traversing the centromere region and joining sister kinetochores, in metaphase II centromeres. This strand disappears at the metaphase II/anaphase II transition and relocates to the spindle midzone (By similarity). Colocalizes with AURKB at mitotic chromosomes (PubMed:11453556). Localizes to inner kinetochore (PubMed:16760428). Localizes on chromosome arms and inner centromeres from prophase through metaphase and then transferring to the spindle midzone and midbody from anaphase through cytokinesis (PubMed:15316025). Colocalizes to the equatorial cell cortex at anaphase (PubMed:11453556).

Tissue specificity

Epithelium, Lung, Testis.

Validation Data



Western Blot analysis of HeLa cells, using primary antibody at 1:1000 dilution. Secondary antibody was diluted at 1:10000.

For Research Use Only