

VE-Cadherin Rabbit pAb (AR20055)

Key Features

Host Species:	Rabbit
Reactivity:	Human, Mouse
Applications:	WB, IHC, IF, ELISA
Isotype:	IgG
MW:	88kD (Calculated) 120kD (Observed)

Recommended Dilution Ratios

WB:	1:500-2000
IHC:	1:100-300
IF:	1:50-200
ELISA:	1: 5000
Storage	-15°C to -25°C/1 year (Do not lower than -25°C)

Basic Information

Clonality	Polyclonal
-----------	------------

Immunogen Information

Specificity	VE-Cadherin Polyclonal Antibody detects endogenous levels of VE-Cadherin protein.
-------------	---

Target Information

Gene name	CDH5
Protein Name	Cadherin-5

Organism	Gene ID	UniProt ID
Human	1003	P33151
Mouse	12562	P55284

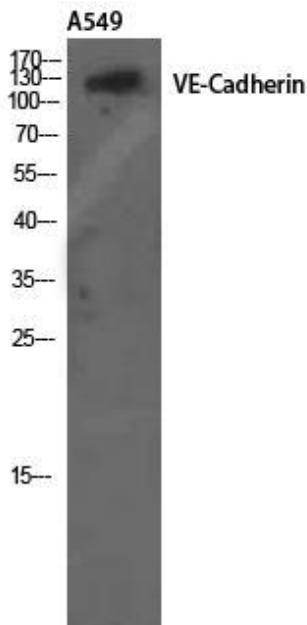
Cellular Localization

Cell junction. Cell membrane; Single-pass type I membrane protein. Found at cell-cell boundaries and probably at cell-matrix boundaries. KRIT1 and CDH5 reciprocally regulate their localization to endothelial cell-cell junctions.

Tissue specificity

Endothelial tissues and brain.

Validation Data



Western Blot analysis of A549 using VE-Cadherin Polyclonal Antibody. Antibody was diluted at 1:2000. Secondary antibody was diluted at 1:20000



Immunohistochemical analysis of paraffin-embedded human tonsil.

1. Antibody was diluted at 1:200(4°C, overnight).
2. Tris-EDTA, pH9.0 was used for antigen retrieval.
3. Secondary antibody was diluted at 1:200(room temperature, 45min).

For Research Use Only