

SOCS-3 Rabbit pAb(AR20045)

Key Features

Host Species:	Rabbit
Reactivity:	Human, Mouse, Rat
Applications:	WB, IHC, IF
Isotype:	IgG
MW:	25kD (Calculated)

Recommended Dilution Ratios

WB:	1:500-2000
IHC:	1:50-300
IF:	1:50-200

Storage

-15°C to -25°C/1 year (Do not lower than -25°C)

Basic Information

Clonality	Polyclonal
-----------	------------

Immunogen Information

Specificity	The antibody detects endogenous SOCS-3
-------------	--

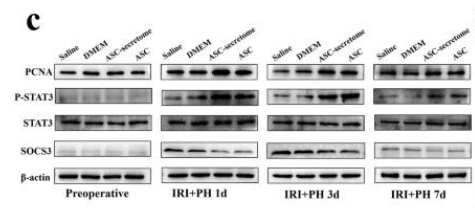
Target Information

Gene name	SOCS3 CIS3 SSI3
Protein Name	Suppressor of cytokine signaling 3 (SOCS-3) (Cytokine-inducible SH2 protein 3) (CIS-3) (STAT-induced STAT inhibitor 3) (SSI-3)

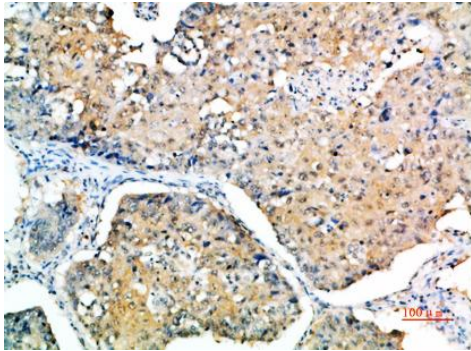
Organism	Gene ID	UniProt ID
Human	9021	O14543
Mouse	12702	O35718
Rat		O88583

Cellular Localization	intracellular,cytoplasm,cytosol
Tissue specificity	Widely expressed with high expression in heart, placenta, skeletal muscle, peripheral blood leukocytes, fetal and adult lung, and fetal liver and kidney. Lower levels in thymus.

Validation Data



Jiao, Z., Ma, Y., Zhang, Q. et al. The adipose-derived mesenchymal stem cell secretome promotes hepatic regeneration in miniature pigs after liver ischaemia-reperfusion combined with partial resection. *Stem Cell Res Ther* 12, 218 (2021).



Immunohistochemical analysis of paraffin-embedded human-lung-cancer, antibody was diluted at 1:200

For Research Use Only