

## HIF-1 $\alpha$ Rabbit pAb (AR20045)

### Key Features

Host Species:	Rabbit
Reactivity:	Human, Mouse, Rat
Applications:	WB, IF, IHC, IP, ELISA
Isotype:	IgG
MW:	92-130kD (Observed)

### Recommended Dilution Ratios

WB:	1:500-2000
IF:	1: 50-200
IHC:	1: 100-300
IP:	1: 200
ELISA:	1: 40000
Storage	-15°C to -25°C/1 year (Do not lower than -25°C)

### Basic Information

Clonality	Polyclonal
-----------	------------

### Immunogen Information

Specificity	HIF-1 $\alpha$ Polyclonal Antibody detects endogenous levels of HIF-1 $\alpha$ protein.
-------------	---

### Target Information

Gene name	HIF1A
Protein Name	Hypoxia-inducible factor 1-alpha Organism Human

Organism	Gene ID	UniProt ID
Human	3091	Q16665
Mouse	15251	Q61221
Rat	29560	O35800

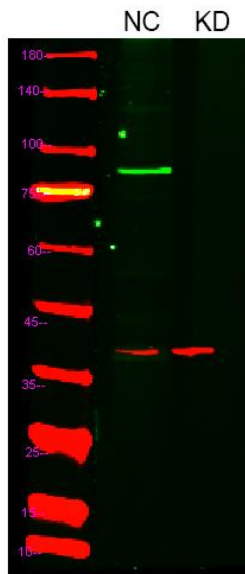
Cellular Localization	Cytoplasm. Nucleus. Nucleus speckle. Colocalizes with HIF3A in the nucleus and speckles (By similarity). Cytoplasmic in normoxia, nuclear
-----------------------	---

translocation in response to hypoxia (PubMed:9822602).

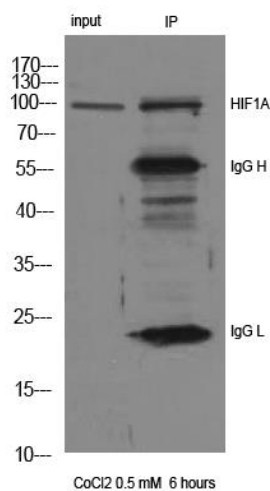
Expressed in most tissues with highest levels in kidney and heart. Overexpressed in the majority of common human cancers and their metastases, due to the presence of intratumoral hypoxia and as a result of mutations in genes encoding oncoproteins and tumor suppressors. A higher level expression seen in pituitary tumors as compared to the pituitary gland.

## Tissue specificity

## Validation Data



Western blot analysis of lysates from 1)Hela cell, 2)Hela cells knockdown by siRNA (F:GCCACAUCACGUAUAUGATT, R:UCAUAUACGUGAAUGUGGCTT), (Green) primary antibody was diluted at 1:1000, 4°C overnight, Dylight 800 secondary antibody was diluted at 1:10000, 37°C 1hour. (Red) GAPDH Monoclonal Antibody antibody was diluted at 1:5000 as loading control, 4°C overnight, Dylight 680 secondary antibody was diluted at 1:10000, 37° 1hour.



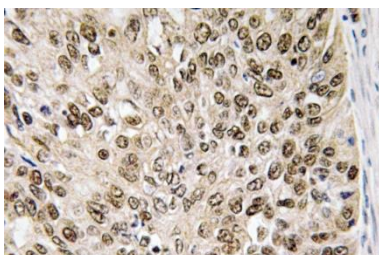
1) Input: Hela Lysate

2) IP product: IP dilute 1: 200 Hela treated with 0.05mM CoCl<sub>2</sub> for 6 hours.

Western blot analysis:

primary antibody: 1:1000

Secondary antibody: Goat anti-Mouse IgG, 1: 5000



Immunohistochemistry analysis of HIF-1α antibody in paraffin-embedded human brain tissue.