

KLF3 Rabbit pAb(AR20043)

Key Features

| | |
|---------------|-------------------|
| Host Species: | Rabbit |
| Reactivity: | Human, Mouse |
| Applications: | WB,ELISA,IHC |
| Isotype: | IgG |
| MW: | 38kD (Calculated) |

Recommended Dilution Ratios

| | |
|--------|--------------|
| WB: | 1:500-2000 |
| IHC: | 1:50-300 |
| ELISA: | 1:2000-20000 |

Storage

-15°C to -25°C/1 year (Do not lower than -25°C)

Basic Information

| | |
|-----------|------------|
| Clonality | Polyclonal |
|-----------|------------|

Immunogen Information

| | |
|-------------|--|
| Specificity | This antibody detects endogenous levels of KLF3 at Human/Mouse |
|-------------|--|

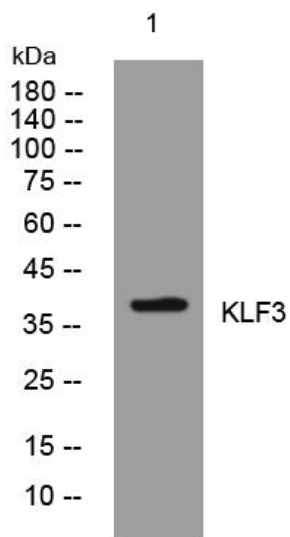
Target Information

| | |
|--------------|-----------|
| Gene name | KLF3 BKLF |
| Protein Name | KLF3 |

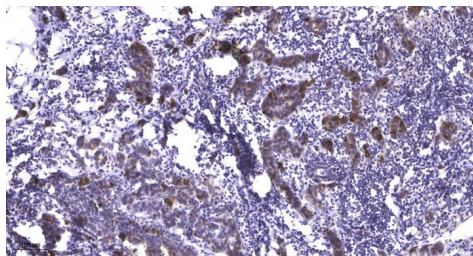
| Organism | Gene ID | UniProt ID |
|----------|---------|------------|
| Human | 51274 | P57682 |
| Mouse | 16599 | Q60980 |

| | |
|-----------------------|-----------|
| Cellular Localization | Nucleus . |
|-----------------------|-----------|

Validation Data



Western blot analysis of lysates from A431 cells, primary antibody was diluted at 1:1000, 4° over night



Immunohistochemical analysis of paraffin-embedded human Breast cancer. 1, Antibody was diluted at 1:200(4° overnight). 2, Tris-EDTA,pH9.0 was used for antigen retrieval. 3,Secondary antibody was diluted at 1:200(room temperature, 45min)

For Research Use Only