

# CD38 Rabbit mAb (AR1294)

## Key Features

Host Species:	Rabbit
Reactivity:	Human
Applications:	WB,IHC,IF,IP,ELISA
Isotype:	IgG,Kappa
MW:	34kD (Calculated) 45-60kD (Observed)

## Recommended Dilution Ratios

IHC:	1:10000-30000
WB:	1:1000-5000
IF:	1:200-1000
ELISA:	1:5000-20000
IP:	1:50-200

## Storage

-15°C to -25°C/1 year (Do not lower than -25°C)

## Basic Information

Clonality: Monoclonal

## Immunogen Information

Specificity: Endogenous

## Target Information

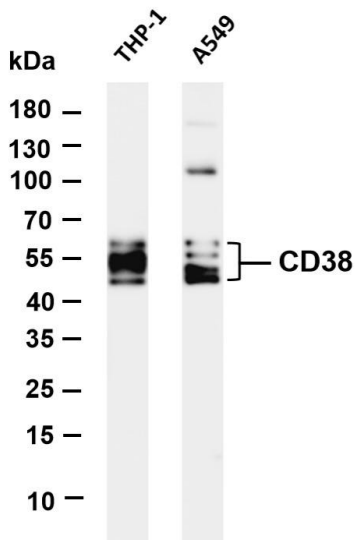
Gene name: CD38  
Protein Name: ADP-ribosyl cyclase 1

Organism	Gene ID	UniProt ID
Human	952	P28907
Mouse		P56528

Cellular Localization: Membrane

Tissue specificity: Expressed at high levels in pancreas, liver, kidney, brain, testis, ovary, placenta, malignant lymphoma and neuroblastoma.

## Validation Data



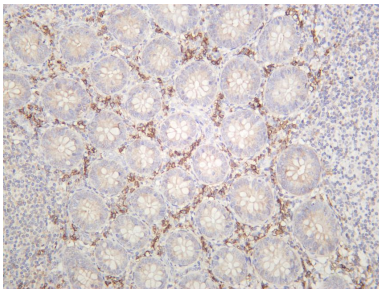
Various whole cell lysates were separated by 4-20% SDS-PAGE, and the membrane was blotted with anti-CD38 antibody. The HRP-conjugated Goat anti-Rabbit IgG(H + L) antibody was used to detect the antibody.

Lane 1: THP-1

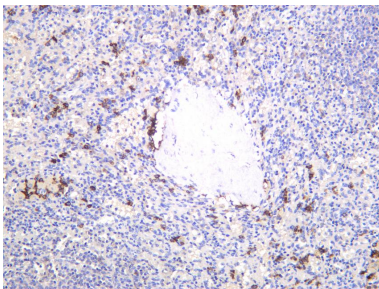
Lane 2: A549

Predicted band size: 34kDa

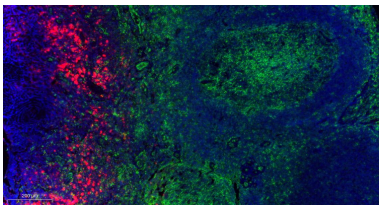
Observed band size: 45-65kDa



Human appendix was stained with anti-CD38 rabbit antibody



Human spleen was stained with anti-CD38 rabbit antibody



Fluorescence multiplex immunohistochemical analysis of human tonsil tissue (formalin-fixed paraffin-embedded section). The immunostaining was performed by Sextuple-Fluorescence kit. CD38 rabbit mAb(RED) and CD14 rabbit mAb(GREEN) was tested with different TSA Fluorescence reagent. Microscopy and pseudocoloring of individual dyes was performed using a Slideviewer Imaging System (Excilone).

For Research Use Only