

# ICAM1 Rabbit mAb (AR1027)

## Key Features

Host Species:	Rabbit
Reactivity:	Human
Applications:	WB,IHC,IF,IP,ELISA
Isotype:	IgG,Kappa
MW:	58kD (Calculated) 100kD (Observed)

## Recommended Dilution Ratios

IHC:	1:100-200
WB:	1:1000-5000
IF:	1:200-1000
ELISA:	1:5000-20000
IP:	1:50-200

## Storage

-15°C to -25°C/1 year (Do not lower than -25°C)

## Basic Information

Clonality: Monoclonal

## Immunogen Information

Specificity: Endogenous

## Target Information

Gene name: ICAM1

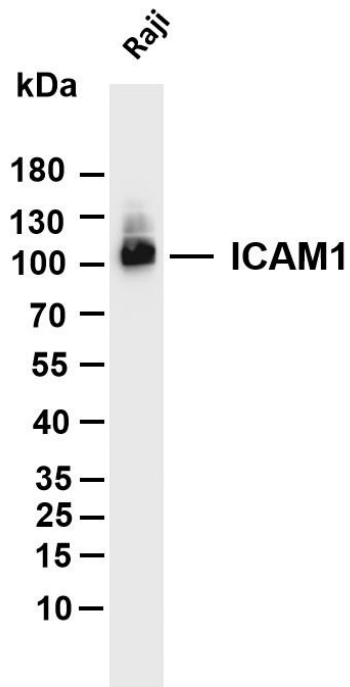
Protein Name: Intercellular adhesion molecule 1

Organism	Gene ID	UniProt ID
Human	3383	P05362
Mouse		P13597

Cellular Localization: Membranous

Tissue specificity: Blood, Kidney, Liver, Melanoma, Plasma

## Validation Data

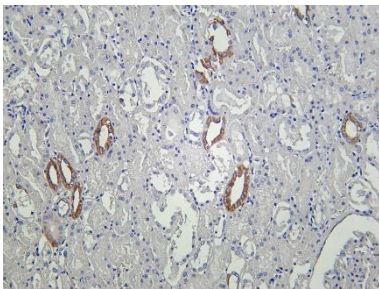


Various whole cell lysates were separated by 4-20% SDS-PAGE, and the membrane was blotted with anti-ICAM1 antibody. The HRP conjugated Goat anti-Rabbit IgG(H + L) antibody was used to detect the antibody.

Lane 1: Raji

Predicted band size: 58kDa

Observed band size: 100kDa



Human kidney was stained with Anti-ICAM1 rabbit antibody

For Research Use Only