

## Bax Rabbit mAb (AR1121)

### Key Features

Host Species:	Rabbit
Reactivity:	Human, Mouse, Rat
Applications:	WB, IHC, IF, IP, ELISA
Isotype:	IgG, Kappa
MW:	21 kD (Calculated) 21 kD (Observed)

### Recommended Dilution Ratios

IHC:	1:200-1000
WB:	1:1000-5000
IF:	1:200-1000
ELISA:	1:5000-20000
IP:	1:50-200

### Storage

-15°C to -25°C/1 year (Do not lower than -25°C)

### Basic Information

Clonality: Monoclonal

### Immunogen Information

Specificity: Endogenous

### Target Information

Gene name: BAX  
Protein Name: Apoptosis regulator BAX

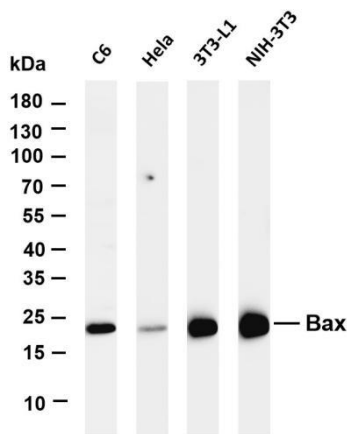
Organism	Gene ID	UniProt ID
Human	581	Q07812
Mouse	12028	Q07813
Rat		Q63690

Cellular Localization: Cytoplasm, Nuclear

Tissue specificity: Expressed in a wide variety of tissues. Isoform Psi is found in glial tumors. Isoform Alpha is expressed in spleen, breast, ovary, testis,

colon and brain, and at low levels in skin and lung. Isoform Sigma is expressed in spleen, breast, ovary, testis, lung, colon, brain and at low levels in skin. Isoform Alpha and isoform Sigma are expressed in pro-myelocytic leukemia, histiocytic lymphoma, Burkitt's lymphoma, T-cell lymphoma, lymphoblastic leukemia, breast adenocarcinoma, ovary adenocarcinoma, prostate carcinoma, prostate adenocarcinoma, lung carcinoma, epidermoid carcinoma, small cell lung carcinoma and colon adenocarcinoma cell lines.

## Validation Data



Various whole cell lysates were separated by 4-20% SDS-PAGE, and the membrane was blotted with anti-Bax antibody. The HRP-conjugated Goat anti-Rabbit IgG(H + L) antibody was used to detect the antibody.

Lane 1: C6

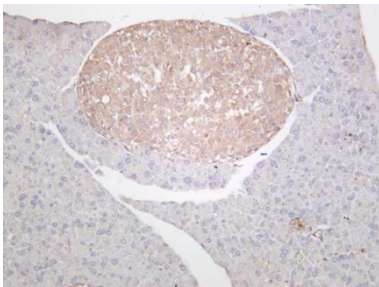
Lane 2: HeLa

Lane 3: 3T3-L1

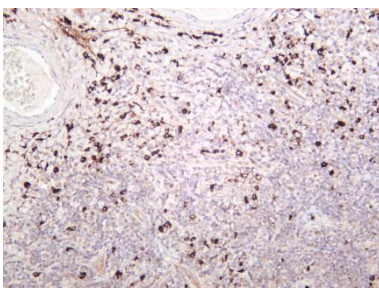
Lane 4: NIH-3T3

Predicted band size: 21kDa

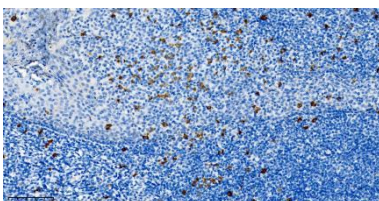
Observed band size: 21kDa



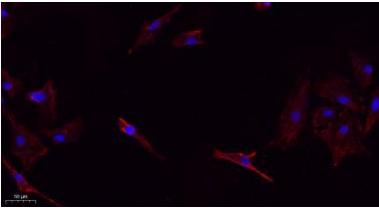
Mouse pancreas was stained with anti-Bax rabbit antibody.



Human tonsil was stained with anti-Bax rabbit antibody



Human tonsil was stained with anti-Bax Rabbit antibody



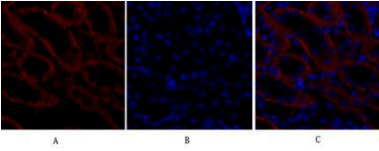
#### Immunofluorescence analysis of A549.

1. primary Antibody(red) was diluted at 1:200(4°C overnight).
2. Goat Anti Rabbit IgG (H&L) - Alexa Fluor 594 Secondary antibody was diluted at 1:1000(room temperature, 50min).
3. DAPI (blue) 10min.

#### Immunofluorescence analysis of mouse-kidney tissue.

1. Bax Antibody(red) was diluted at 1:200(4°C, overnight).
2. Cy3 labeled Secondary antibody was diluted at 1:300(room temperature, 50min).
3. DAPI (blue) 10min.

Picture A: Target. Picture B: DAPI. Picture C: merge of A+B



For Research Use Only