

TGFβ RI Rabbit mAb(AR1614)

Key Features

Host Species:	Rabbit
Reactivity:	Human,Mouse,Rat
Applications:	WB,IF,IP,ELISA
Isotype:	IgG,Kappa
MW:	56kD (Calculated) 55kD (Observed)

Recommended Dilution Ratios

WB:	1:2000-1:10000
IF:	1:200-1:1000
IP:	1:50-200
ELISA:	1:5000-20000

Storage

-15°C to -25°C/1 year (Do not lower than -25°C)

Basic Information

Clonality	Monoclonal
-----------	------------

Immunogen Information

Specificity	Endogenous
-------------	------------

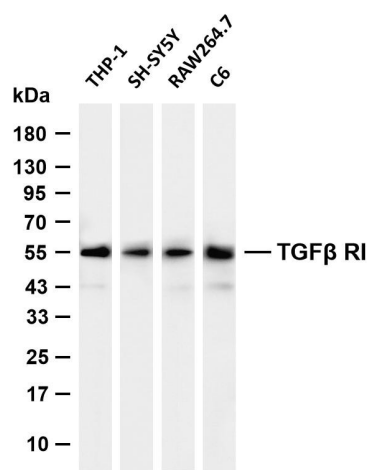
Target Information

Gene name	TGFBR1 ALK5 SKR4
Protein Name	TGF-beta receptor type-1

Organism	Gene ID	UniProt ID
Human	7046	P36897
Mouse	21812	Q64729
Rat		P80204

Cellular Localization	Cell membrane ; Single-pass type I membrane protein . Cell junction, tight junction . Cell surface . Membrane raft .
Tissue specificity	Found in all tissues examined, most abundant in placenta and least abundant in brain and heart. Expressed in a variety of cancer cell lines (PubMed:25893292).

Validation Data



Various whole cell lysates were separated by 4-20% SDS-PAGE, and the membrane was blotted with anti-TGFβ RI antibody. The HRP conjugated Goat anti-Rabbit IgG (H + L) antibody was used to detect the antibody.

Lane 1: THP-1

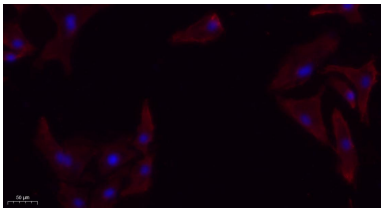
Lane 2: SH-SY5Y

Lane 3: RAW264.7

Lane 4: C6

Predicted band size: 56kDa

Observed band size: 55kDa



Immunofluorescence analysis of A549. 1,primary Antibody(red) was diluted at 1:200(4°C overnight). 2, Goat Anti Rabbit IgG (H&L) - Alexa Fluor 594 Secondary antibody was diluted at 1:1000(room temperature, 50min).3, DAPI(blue) 10min.

For Research Use Only