

Histone H2A.X Rabbit pAb (AR20100)

Key Features

Host Species:	Rabbit
Reactivity:	Human,Mouse,Rat
Applications:	WB,IHC,IF,CoIP,ELISA
Isotype:	IgG
MW:	15kDa (Calculated) 15kDa (Observed)

Recommended Dilution Ratios

WB:	1:500-2000
IHC:	1:100-300
IF:	1:200-1000
IP:	1:200-500
ELISA:	1: 10000
Storage	-15°C to -25°C/1 year (Do not lower than -25°C)

Basic Information

Clonality	Polyclonal
-----------	------------

Immunogen Information

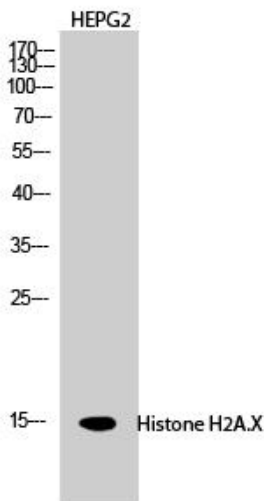
Specificity	Histone H2A.X Polyclonal Antibody detects endogenous levels of Histone H2A.X protein.
-------------	---

Target Information

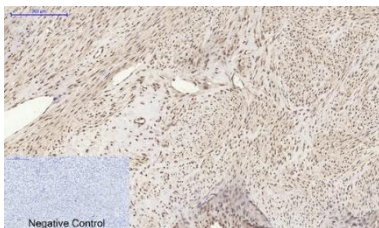
Gene name	H2AFX
Protein Name	Histone H2A.x

	Organism	Gene ID	UniProt ID
	Human	3014	P16104
	Mouse	15270	P27661
Cellular Localization	Nucleus. Chromosome.		

Validation Data

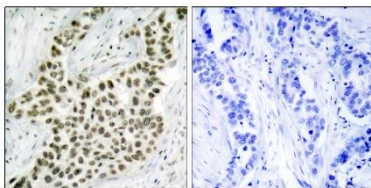


Western Blot analysis of HEPG2 cells using Histone H2A.X Polyclonal Antibody diluted at 1:2000.

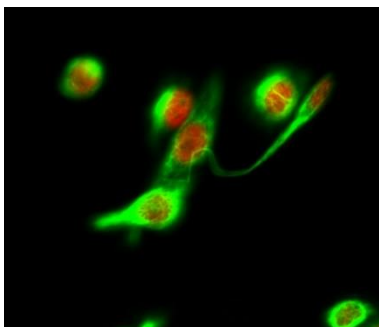


Immunohistochemical analysis of paraffin-embedded Human-uterus tissue.

1. Histone H2A.X Polyclonal Antibody was diluted at 1:200(4°C, overnight).
2. Sodium citrate pH 6.0 was used for antibody retrieval (>98°C, 20min).
3. Secondary antibody was diluted at 1:200(room temperature, 30min). Negative control was used by secondary antibody only.



Immunohistochemistry analysis of paraffin-embedded human breast carcinoma tissue, using Histone H2A.X Antibody. The picture on the right is blocked with the synthesized peptide.



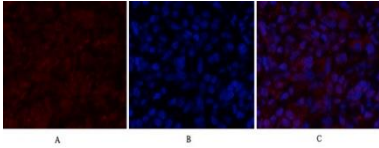
Immunofluorescence analysis of Hela cell.

1. Histone H2A.X Polyclonal Antibody(red) was diluted at 1:200(4°C overnight). LC3B Polyclonal Antibody(green) was diluted at 1:200(4°C overnight).
2. Goat Anti Rabbit Alexa Fluor 594 was diluted at 1:1000(room temperature, 50min). Goat Anti Mouse Alexa Fluor 488 was diluted at 1:1000(room temperature, 50min).

Immunofluorescence analysis of rat-lung tissue.

1. Histone H2A.X Polyclonal Antibody(red) was diluted at 1:200(4°C, overnight).
2. Cy3 labeled Secondary antibody was diluted at 1:300(room temperature, 50min).
3. Picture B: DAPI(blue) 10min.

Picture A: Target. Picture B: DAPI. Picture C: merge of A+B



For Research Use Only