

HIF-1 α Rabbit mAb (AR1606)

Key Features

Host Species:	Rabbit
Reactivity:	Human, Mouse
Applications:	WB, IF,IP, ELISA
Isotype:	IgG,Kappa
MW:	93kD (Calculated) 120kD (Observed)

Recommended Dilution Ratios

WB:	1:2000-10000
IF:	1:200-1000
IP:	1:50-200
ELISA:	1:5000-20000

Storage

-15°C to -25°C/1 year (Do not lower than -25°C)

Basic Information

Clonality	Monoclonal
-----------	------------

Immunogen Information

Specificity	Endogenous
-------------	------------

Target Information

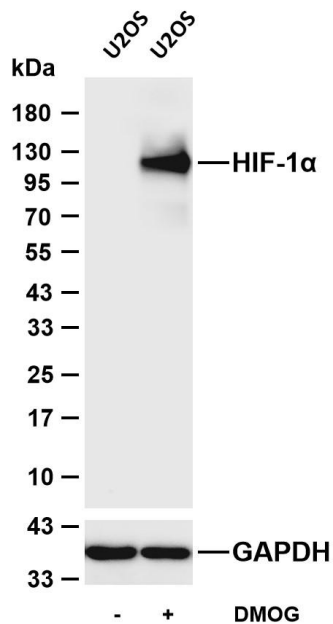
Gene name	HIF1A
Protein Name	Hypoxia-inducible factor 1-alpha

Organism	Gene ID	UniProt ID
Human	3091	Q16665
Mouse	15251	Q61221
Rat	29560	O35800

Cellular Localization	Cytoplasm . Nucleus . Nucleus speckle . Colocalizes with HIF3A in the nucleus and speckles (By similarity). Cytoplasmic in normoxia, nuclear translocation in response to hypoxia (PubMed:9822602).
Tissue specificity	Expressed in most tissues with highest levels in kidney and heart. Overexpressed in the majority of common human cancers and

their metastases, due to the presence of intratumoral hypoxia and as a result of mutations in genes encoding oncoproteins and tumor suppressors. A higher level expression seen in pituitary tumors as compared to the pituitary gland.

Validation Data



Various whole cell lysates were separated by 4-20% SDS-PAGE, and the membrane was blotted with anti-HIF-1α antibody. The HRP conjugated Goat anti-Rabbit IgG (H + L) antibody was used to detect the antibody.

Lane 1: U2OS

Lane 2: U2OS was treated with DMOG(1mM) for 6 hours

Predicted band size: 93kDa

Observed band size: 120kDa

For Research Use Only