

PKM2 Rabbit mAb (AR1023)

Key Features

Host Species:	Rabbit
Reactivity:	Human,Mouse,Rat
Applications:	WB,IHC,IF,ELISA
Isotype:	IgG,Kappa
MW:	57kD (Calculated) 57kD (Observed)

Recommended Dilution Ratios

IHC:	1:200-1000
WB:	1:1000-5000
IF:	1:200-1000
ELISA:	1:5000-20000

Storage

-15°C to -25°C/1 year (Do not lower than -25°C)

Basic Information

Clonality	Monoclonal
-----------	------------

Immunogen Information

Specificity	Endogenous
-------------	------------

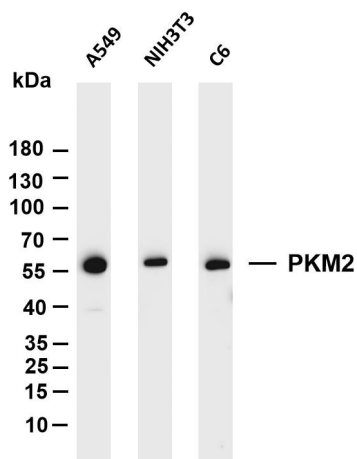
Target Information

Gene name	PKM
Protein Name	Pyruvate kinase PKM

Organism	Gene ID	UniProt ID
Human	5315	P14618
Mouse	18746	P52480
Rat	25630	P11980

Cellular Localization	Cytoplasm
Tissue specificity	[Isoform M2]: Specifically expressed in proliferating cells, such as embryonic stem cells, embryonic carcinoma cells, as well as cancer cells; [Isoform M1]: Expressed in adult tissues (PubMed:18337823). Not expressed in tumor cells (PubMed:18337823).

Validation Data



Various whole cell lysates were separated by 4-20% SDS-PAGE, and the membrane was blotted with anti-PKM antibody. The HRP-conjugated Goat anti-Rabbit IgG(H + L) antibody was used to detect the antibody.

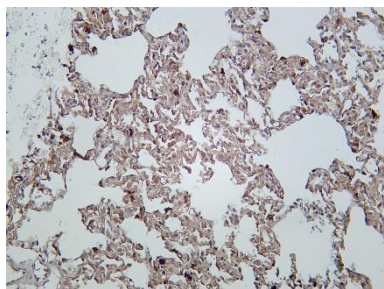
Lane 1: A549

Lane 2: NIH3T3

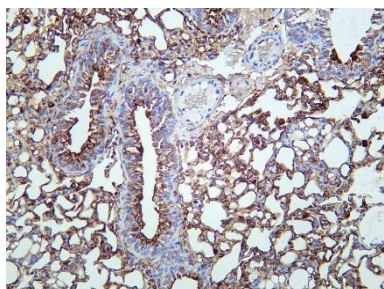
Lane 3: C6

Predicted band size: 57kDa

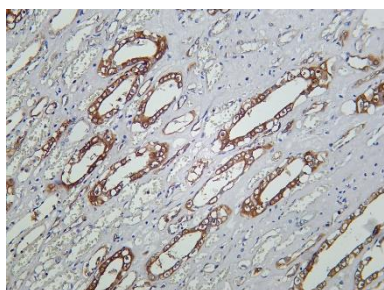
Observed band size: 57kDa



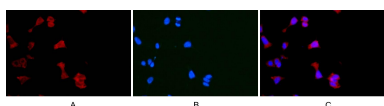
Rat lung was stained with Anti-PKM rabbit antibody



Mouse lung was stained with Anti-PKM rabbit antibody



Human kidney was stained with Anti-PKM rabbit antibody



Immunofluorescence analysis of HEK293.

Picture A: PKM antibody (red).

Picture B: DAPI (blue). Picture C: Merge of A+B