

## IL-1RI Rabbit mAb (AR1980)

### Key Features

|               |  |
|---------------|--|
| Host Species: | Rabbit                                 |
| Reactivity:   | Mouse,Rat                              |
| Applications: | WB,IF,ELISA                            |
| Isotype:      | IgG,Kappa                              |
| MW:           | 65 kD (Calculated)<br>80 kD (Observed) |

### Recommended Dilution Ratios

|        |              |
|--------|--------------|
| WB:    | 1:2000-10000 |
| IF:    | 1:200-1000   |
| ELISA: | 1:5000-20000 |

### Storage

-15°C to -25°C/1 year (Do not lower than -25°C)

### Basic Information

|           |            |
|-----------|------------|
| Clonality | Monoclonal |
|-----------|------------|

### Immunogen Information

|             |            |
|-------------|------------|
| Specificity | Endogenous |
|-------------|------------|

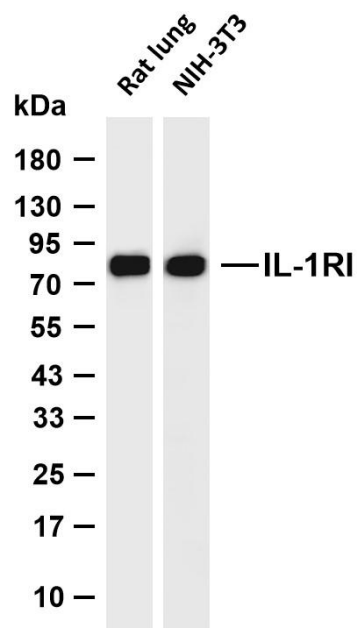
### Target Information

|              |                               |
|--------------|-------------------------------|
| Gene name    | IL1R1                         |
| Protein Name | Interleukin-1 receptor type 1 |

| Organism | Gene ID | UniProt ID |
|----------|---------|------------|
| Human    | 3554    | P14778     |
| Mouse    |         | P13504     |

|                       |   |
|-----------------------|---|
| Cellular Localization | Membrane ; Single-pass type I membrane protein . Cell membrane . Secreted .             |
| Tissue specificity    | Expressed in T-helper cell subsets. Preferentially expressed in T-helper 1 (Th1) cells. |

## Validation Data



Various whole cell lysates were separated by 4-20% SDS-PAGE, and the membrane was blotted with anti-IL-1RI antibody. The HRP conjugated Goat anti-Rabbit IgG (H + L) antibody was used to detect the antibody.

Lane 1: Rat lung

Lane 2: NIH-3T3

Predicted band size: 65kDa

Observed band size: 80kDa

For Research Use Only