

GABARAP+GABARAPL1/2 Rabbit mAb (AR1978)

Key Features

Host Species:	Rabbit
Reactivity:	Human,Mouse,Rat
Applications:	WB,IHC,IF,ELISA
Isotype:	IgG,Kappa
MW:	14 kD (Calculated) 18kD (Observed)

Recommended Dilution Ratios

IHC:	1:1000-4000
WB:	1:2000-10000
IF:	1:200-1000
ELISA:	1:5000-20000

Storage

-15°C to -25°C/1 year (Do not lower than -25°C)

Basic Information

Clonality	Monoclonal
-----------	------------

Immunogen Information

Specificity	Endogenous
-------------	------------

Target Information

Gene name	GABARAP GABARAPL1 GABARAPL2
Protein Name	Gamma-aminobutyric acid receptor-associated protein;Gamma-aminobutyric acid receptor associated protein-like 1;Gamma-aminobutyric acid receptor-associated protein-like 2

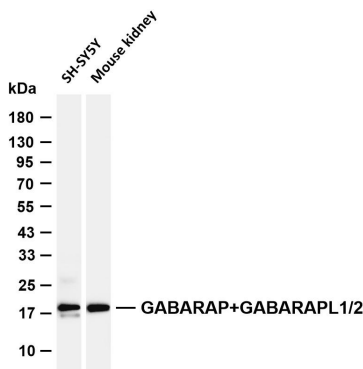
Organism	Gene ID	UniProt ID
Human	11337; 23710; 11345	O95166; Q9H0R8; P60520
Mouse	56486; 57436; 93739	Q9DCD6; Q8R3R8; P60521
Rat	58974; 57436	P60517; Q0VGK0; P60522

Cellular Localization	Cytoplasmic vesicle, autophagosome . Cytoplasmic vesicle
-----------------------	--

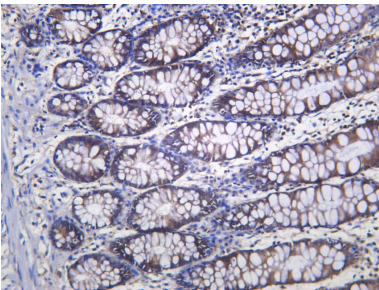
membrane ; Lipid-anchor . Cytoplasm, cytoskeleton . Endoplasmic reticulum . Golgi apparatus .
Heart, brain, placenta, liver, skeletal muscle, kidney and pancreas

Tissue specificity

Validation Data



Various whole cell lysates were separated by 4-20% SDS-PAGE, and the membrane was blotted with anti-GABARAP+GABARAPL1/L2 antibody. The HRP-conjugated Goat anti-Rabbit IgG (H + L) antibody was used to detect the antibody.
Lane 1: SH-SY5Y
Lane 2: Mouse kidney
Predicted band size: 14kDa
Observed band size: 18kDa



Human colon was stained with anti-GABARAP+GABARAPL1/2 Rabbit antibody

For Research Use Only