

## ZAC1 Rabbit pAb (AR20097)

### Key Features

|               |                 |
|---------------|-----------------|
| Host Species: | Rabbit          |
| Reactivity:   | Human           |
| Applications: | WB,ELISA        |
| Isotype:      | IgG             |
| MW:           | 50kD (Observed) |

### Recommended Dilution Ratios

|        |              |
|--------|--------------|
| WB:    | 1:500-1:2000 |
| ELISA: | 1:10000      |

### Storage

-15°C to -25°C/1 year (Do not lower than -25°C)

### Basic Information

|           |            |
|-----------|------------|
| Clonality | Polyclonal |
|-----------|------------|

### Immunogen Information

|             |   |
|-------------|---|
| Specificity | ZAC1 Polyclonal Antibody detects endogenous levels of ZAC1 protein. |
|-------------|---|

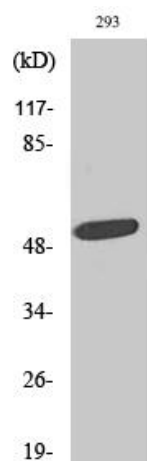
### Target Information

|              |                            |
|--------------|----------------------------|
| Gene name    | PLAGL1                     |
| Protein Name | Zinc finger protein PLAGL1 |

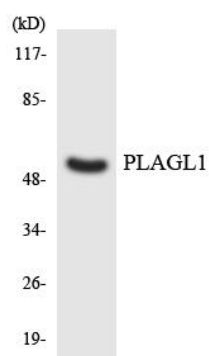
| Organism | Gene ID | UniProt ID |
|----------|---------|------------|
| Human    | 5325    | Q9UM63     |

|                       |  |
|-----------------------|--|
| Cellular Localization | Nucleus .  |
| Tissue specificity    | Colon,Fetal kidney,Lung,Mammary gland,Pituitary,Placenta |

## Validation Data



Western Blot analysis of various cells using ZAC1 Polyclonal Antibody. Secondary antibody was diluted at 1:20000.



Western blot analysis of the lysates from HeLa cells using PLAGL1 antibody.

For Research Use Only