

## C7orf42 Rabbit mAb (AR1902)

### Key Features

Host Species:	Rabbit
Reactivity:	Human, Mouse, Rat
Applications:	WB, FC
Isotype:	IgG, Kappa
MW:	35kDa (Calculated) 35kDa (Observed)

### Recommended Dilution Ratios

WB:	1:1000-5000
FC:	1:100-500

### Storage

-15°C to -25°C/1 year (Do not lower than -25°C)

### Basic Information

Clonality	Monoclonal
-----------	------------

### Immunogen Information

Specificity	Endogenous
-------------	------------

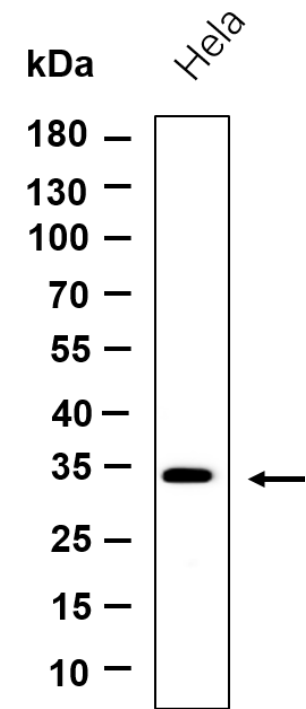
### Target Information

Gene name	TMEM248 C7orf42
Protein Name	TM248

Organism	Gene ID	UniProt ID
Human	55069	Q9NWD8
Mouse	71667	Q3TBN1
Rat	288616	Q6AY76

Cellular Localization	Membrane; Multi-pass membrane protein.
-----------------------	----------------------------------------

Validation Data



Western blot analysis of lysates from Hela cell, primary antibody was diluted at 1:1000, 4°C overnight. Dylight 800 secondary antibody was diluted at 1:10000, 37°C 1hour.

For Research Use Only