

## ZO1 Rabbit mAb (AR1587)

### Key Features

Host Species:	Rabbit
Reactivity:	Human, Mouse, Rat
Applications:	WB, IHC, IF, ELISA
Isotype:	IgG, Kappa
MW:	195kD (Calculated) 220kD (Observed)

### Recommended Dilution Ratios

IHC:	1:1000-4000
WB:	1:2000-10000
IF:	1:200-1000
ELISA:	1:5000-20000

### Storage

-15°C to -25°C/1 year (Do not lower than -25°C)

### Basic Information

Clonality	Monoclonal
-----------	------------

### Immunogen Information

Specificity	Endogenous
-------------	------------

### Target Information

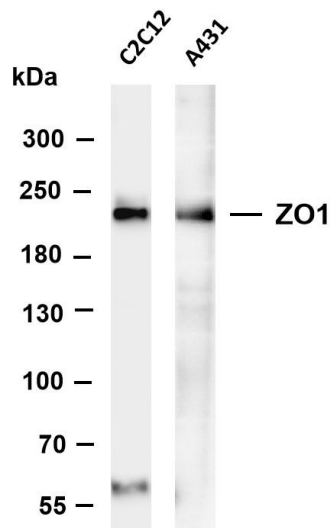
Gene name	TJP1 ZO1
Protein Name	Tight junction protein ZO-1 (Tight junction protein 1) (Zona occludens protein 1) (Zonula occludens protein 1)

Organism	Gene ID	UniProt ID
Human	7082	Q07157
Mouse		P39447

Cellular Localization	Membrane
-----------------------	----------

Tissue specificity	The alpha-containing isoform is found in most epithelial cell junctions. The short isoform is found both in endothelial cells and the highly specialized epithelial junctions of renal glomeruli and Sertoli cells of the seminiferous tubules.
--------------------	---

## Validation Data



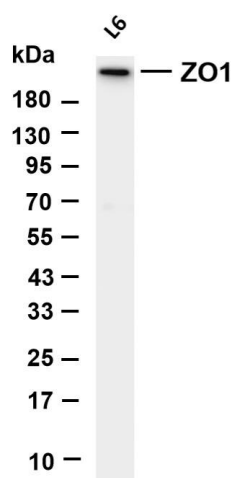
Various whole cell lysates were separated by 4-8% SDS-PAGE, and the membrane was blotted with anti-ZO1 antibody. The HRP-conjugated Goat anti-Rabbit IgG(H + L) antibody was used to detect the antibody.

Lane 1: C2C12

Lane 2: A431

Predicted band size: 195kDa

Observed band size: 220kDa

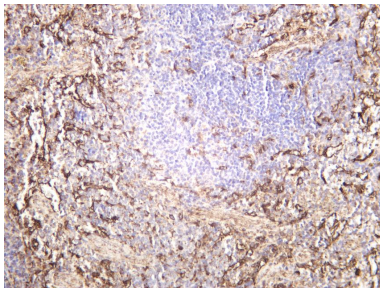


Various whole cell lysates were separated by 4-20% SDS-PAGE, and the membrane was blotted with anti-ZO1 antibody. The HRP-conjugated Goat anti-Rabbit IgG(H + L) antibody was used to detect the antibody.

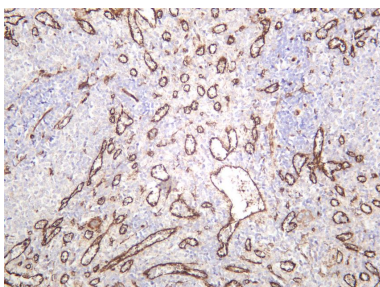
Lane 1: L6

Predicted band size: 195kDa

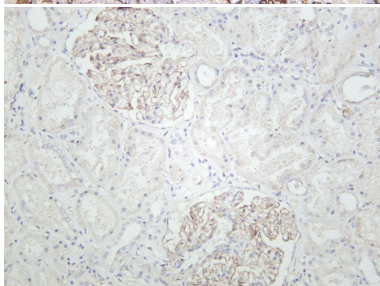
Observed band size: 220kDa



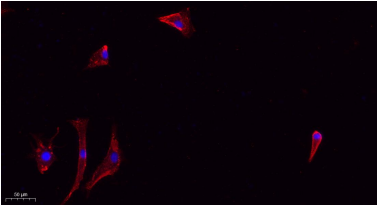
Mouse spleen was stained with anti-ZO1 rabbit antibody



Rat spleen was stained with anti-ZO1 rabbit antibody



Human kidney was stained with anti-ZO1 rabbit antibody



Immunofluorescence analysis of A549.

1. primary Antibody(red) was diluted at 1:200(4°C overnight).
2. Goat Anti Rabbit IgG (H&L) - Alexa Fluor 594 Secondary antibody was diluted at 1:1000(room temperature, 50min).
3. DAPI (blue) 10min.

For Research Use Only