

Histone H3 (Acetyl Lys9) Rabbit mAb (AR1900)

Key Features

Host Species:	Rabbit
Reactivity:	Human, Mouse, Rat
Applications:	WB, IHC, IF, IP, ELISA, CHIP, Cut&Tag
Isotype:	IgG, Kappa
MW:	15kDa (Calculated) 17kDa (Observed)

Recommended Dilution Ratios

IHC:	1:1000-4000
WB:	1:2000-10000
IF:	1:200-1000
ELISA:	1:5000-20000
IP:	1:50-200
CHIP:	1:50-100
Cut&Tag:	1:50-100

Storage

-15°C to -25°C/1 year (Do not lower than -25°C)

Basic Information

Clonality	Monoclonal
-----------	------------

Immunogen Information

Specificity	This antibody detects endogenous levels of Histone H3 only when acetylated at Lys9. This antibody does not recognize acetylated at other sites.
-------------	---

Target Information

Gene name	HIST1H3A
Protein Name	Histone H3.1

Organism	Gene ID	UniProt ID
Human	8350; 8351; 8352;	P68431
	8353; 8354; 8355;	
	8356; 8357; 8358;	
	8968	

Mouse	319152	P68433
Rat	291159	Q6LED0

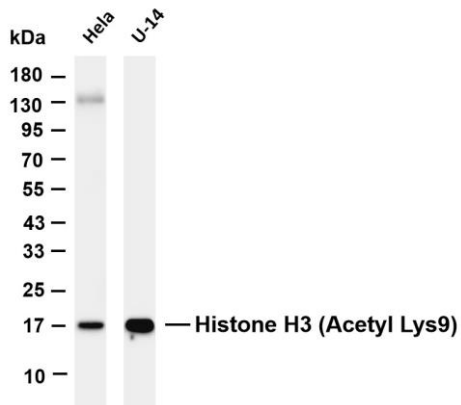
Cellular Localization

Nucleus

Tissue specificity

Blood, Epithelium, Kidney, Lung, Ovary, Spleen, Uterus

Validation Data



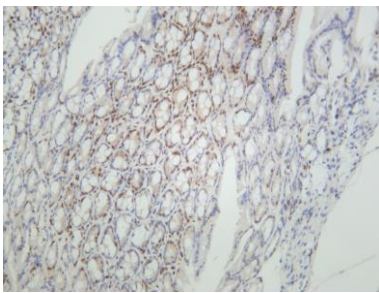
Various whole cell lysates were separated by 4-20% SDS-PAGE, and the membrane was blotted with anti-Histone H3 (Acetyl Lys9) antibody. The HRP conjugated Goat anti-Rabbit IgG(H + L) antibody was used to detect the antibody.

Lane 1: HeLa

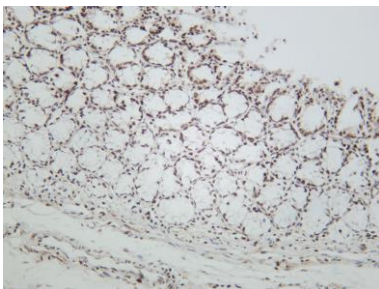
Lane 2: U-14

Predicted band size: 15kDa

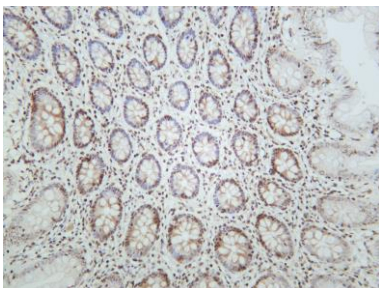
Observed band size: 17kDa



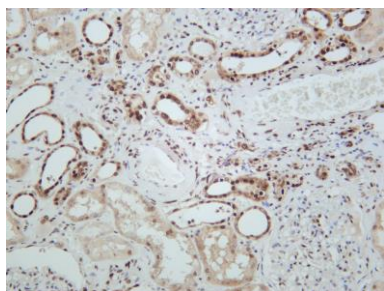
Mouse colon was stained with anti-Histone H3 (Acetyl Lys9) rabbit antibody.



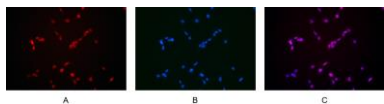
Rat colon was stained with anti-Histone H3 (Acetyl Lys9) rabbit antibody.



Human colon was stained with anti-Histone H3 (Acetyl Lys9) rabbit antibody.



Human kidney was stained with anti-Histone H3 (Acetyl Lys9) rabbit antibody.



Immunofluorescence analysis of HEK293.

Picture A: Histone H3 antibody(red).

Picture B: DAPI (blue).

Picture C: Merge of A+B

For Research Use Only