

## Raf-B (phospho Thr401) Rabbit mAb (AR1899)

### Key Features

Host Species:	Rabbit
Reactivity:	Human, Mouse, Rat
Applications:	WB, IHC, IF, IP, ELISA
Isotype:	IgG, Kappa
MW:	84kDa (Calculated) 84kDa (Observed)

### Recommended Dilution Ratios

IHC:	1:200-1000
WB:	1:2000-10000
IF:	1:200-1000
ELISA:	1:5000-20000
IP:	1:50-200

### Storage

-15°C to -25°C/1 year (Do not lower than -25°C)

### Basic Information

Clonality	Monoclonal
-----------	------------

### Immunogen Information

Specificity	This antibody detects endogenous levels of Raf-B only when phosphorylated at Thr401. This antibody does not recognize phosphorylated at other sites.
-------------	--

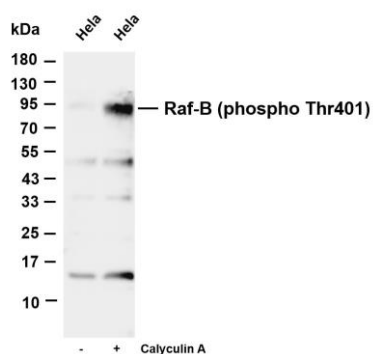
### Target Information

Gene name	BRAF
Protein Name	Serine/threonine-protein kinase B-raf

Organism	Gene ID	UniProt ID
Human	673	P15056
Mouse	109880	P28028

Cellular Localization	Cytoplasm, Nucleus
Tissue specificity	Brain and testis.

## Validation Data



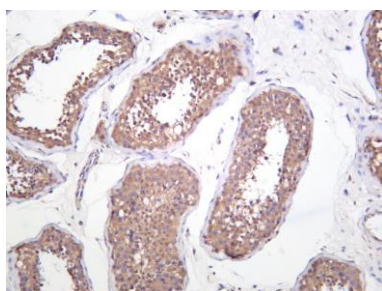
Various whole cell lysates were separated by 4-20% SDS-PAGE, and the membrane was blotted with anti-Raf-B (phospho Thr401) antibody. The HRP conjugated Goat anti-Rabbit IgG(H + L) antibody was used to detect the antibody.

Lane 1: Hela

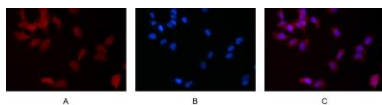
Lane 2: Hela was starved of serum for 24 hours and then treated with 20% fetal bovine serum for 15 minutes, followed by Calyculin A treatment for 15 minutes

Predicted band size: 84kDa

Observed band size: 84kDa



Human testis was stained with anti-Raf-B (phospho Thr401) rabbit antibody.



Immunofluorescence analysis of HEK293.

Picture A: Raf-B antibody (red).

Picture B: DAPI (blue).

Picture C: Merge of A+B

For Research Use Only