

Histone H3 (Tri Methyl Lys27)

Rabbit mAb (AR1898)

Key Features

Host Species:	Rabbit
Reactivity:	Human, Mouse, Rat
Applications:	WB, IHC, IF, IP, ELISA
Isotype:	IgG, Kappa
MW:	15kDa (Calculated) 17kDa (Observed)

Recommended Dilution Ratios

IHC:	1:200-1000
WB:	1:2000-10000
IF:	1:200-1000
ELISA:	1:5000-20000
IP:	1:50-200

Storage

-15°C to -25°C/1 year (Do not lower than -25°C)

Basic Information

Clonality	Monoclonal
-----------	------------

Immunogen Information

Specificity	The antibody detects endogenous Histone H3(Tri Methyl AE13) protein.
-------------	--

Target Information

Gene name	HIST1H3A/HIST1H3/HIST1H3C/HIST1H3D/HIST1H3E/HIST1H3F/ HIST1H3G/HIST1H3H/HIST1H3I/HIST1H3J/HIST2H3A/HIST2H3C/ HIST2H3D/H3F3A/H3F3B/H3F3C
Protein Name	Histone H3.1/Histone H3.2/Histone H3.3

Organism	Gene ID	UniProt ID
Human	8350; 8351; 8352;	P68431; Q71DI3; P84243
	8353; 8354; 8355;	
	8356; 8357; 8358;	
	8968	

Mouse	319152; 15077; 15078	P68433
Rat	291159; 100361558	Q6LED0; P84245

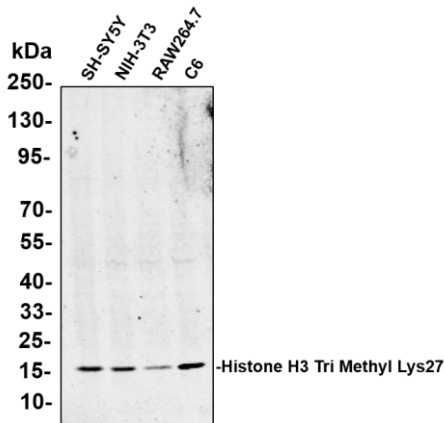
Cellular Localization

Nucleus. Chromosome.

Tissue specificity

Blood, Epithelium, Kidney, Lung, Ovary, Spleen, Uterus

Validation Data



Various whole cell lysates were separated by 4-20% SDS-PAGE, and the primary antibody was used at 4°C, over night with a 1:2500 dilution. The Dylight 800-conjugated Goat anti-Rabbit antibody was used to detect the antibody.

Lane1: SH-SY5Y

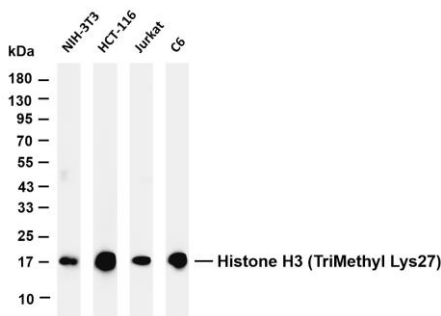
Lane2: NIH-3T3

Lane3: RAW264.7

Lane4: C6

Predicted band size:15kDa

Observed band size: 17kDa



Various whole cell lysates were separated by 4-20% SDS-PAGE, and the membrane was blotted with anti-Histone H3 (Tri Methyl Lys27) antibody. The HRP-conjugated Goat anti-Rabbit IgG(H + L) antibody was used to detect the antibody.

Lane 1: NIH-3T3

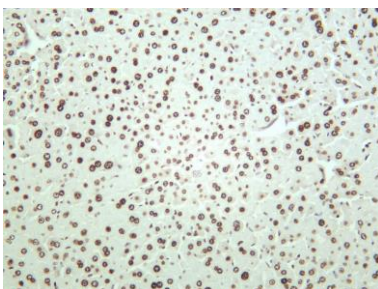
Lane 2: HCT-116

Lane 3: Jurkat

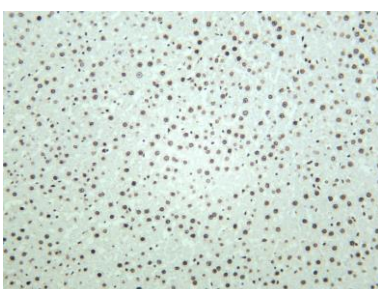
Lane 4: C6

Predicted band size: 15kDa

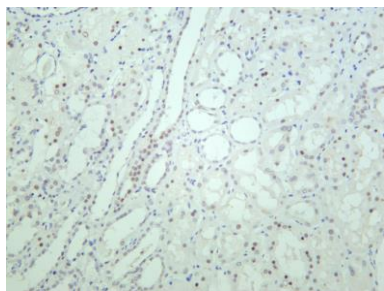
Observed band size: 17kDa



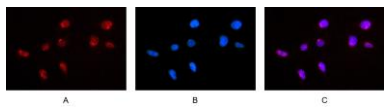
Mouse liver was stained with anti-Histone H3 (Tri Methyl Lys27) rabbit antibody.



Rat liver was stained with anti-Histone H3 (Tri Methyl Lys27) rabbit antibody.



Human kidney was stained with anti-Histone H3 (Tri Methyl Lys27) rabbit antibody.



Immunofluorescence analysis of HEK293.

Picture A: Histone H3 antibody(red).

Picture B: DAPI (blue).

Picture C: Merge of A+B

For Research Use Only