

Tuberin Rabbit mAb (AR1579)

Key Features

Host Species:	Rabbit
Reactivity:	Human,Mouse,Rat
Applications:	WB,IHC,IF,ELISA
Isotype:	IgG,Kappa
MW:	201kD (Calculated) 201kD (Observed)

Recommended Dilution Ratios

IHC:	1:200-1000
WB:	1:2000-10000
IF:	1:200-1000
ELISA:	1:5000-20000

Storage

-15°C to -25°C/1 year (Do not lower than -25°C)

Basic Information

Clonality	Monoclonal
-----------	------------

Immunogen Information

Specificity	Endogenous
-------------	------------

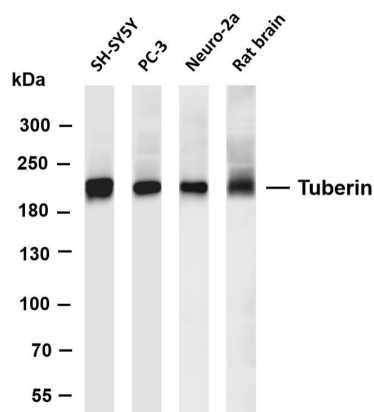
Target Information

Gene name	TSC2
Protein Name	Tuberin

Organism	Gene ID	UniProt ID
Human	7249	P49815
Mouse		Q61037
Rat	24855	P49816

Cellular Localization	Cytoplasm
Tissue specificity	Liver, brain, heart, lymphocytes, fibroblasts, biliary epithelium, pancreas, skeletal muscle, kidney, lung and placenta.

Validation Data



Various whole cell lysates were separated by 4-8% SDS-PAGE, and the membrane was blotted with anti-Tuberin antibody. The HRP-conjugated Goat anti-Rabbit IgG(H + L) antibody was used to detect the antibody.

Lane 1: SHSY5Y

Lane 2: PC-3

Lane 3: Neuro-2a

Lane 4: Rat brain

Predicted band size: 201kDa

Observed band size: 201kDa

For Research Use Only