

Chk1 (Phospho Ser345) Rabbit mAb (AR1892)

Key Features

Host Species:	Rabbit
Reactivity:	Human, Mouse, Rat
Applications:	WB, IF, ELISA
Isotype:	IgG, Kappa
MW:	54kDa (Calculated) 60kDa (Observed)

Recommended Dilution Ratios

WB:	1:500-2000
IF:	1:200-1000
ELISA:	1:5000-20000

Storage

-15°C to -25°C/1 year (Do not lower than -25°C)

Basic Information

Clonality	Monoclonal
-----------	------------

Immunogen Information

Specificity	Phospho-Chk1 (S345) Antibody detects endogenous levels of Chk1 protein only when phosphorylated at S345.
-------------	--

Target Information

Gene name	CHEK1
Protein Name	Serine/threonine-protein kinase Chk1

Organism	Gene ID	UniProt ID
Human	1111	O14757
Mouse	12649	O35280
Rat	140583	Q91ZN7

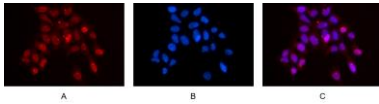
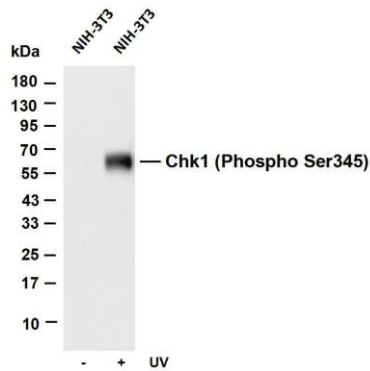
Cellular Localization	Nucleus. Chromosome. Cytoplasm. Cytoplasm, cytoskeleton, microtubule organizing center, centrosome. Nuclear export is mediated at least in part by XPO1/CRM1 (PubMed:12676962). Also localizes to the centrosome specifically during interphase, where it may protect centrosomal CDC2 kinase from inappropriate activation by cytoplasmic CDC25B (PubMed:15311285). Proteolytic cleavage at
-----------------------	--

the C-terminus by SPRTN promotes removal from chromatin (PubMed:31316063).

Tissue specificity

Expressed ubiquitously with the most abundant expression in thymus, testis, small intestine and colon.

Validation Data



Various whole cell lysates were separated by 4-20% SDS-PAGE, and the membrane was blotted with anti-Chk1 (Phospho Ser345) antibody. The HRP conjugated Goat anti-Rabbit IgG(H + L) antibody was used to detect the antibody.

Lane 1: NIH-3T3

Lane 2: NIH-3T3 was treated with UV for 4 hours

Predicted band size: 54kDa

Observed band size: 60kDa

Immunofluorescence analysis of HEK293.

Picture A: Chk1 antibody (red).

Picture B: DAPI (blue).

Picture C: Merge of A+B

For Research Use Only