

p70 S6 kinase β (Phospho Ser371) Rabbit mAb (AR1888)

Key Features

Host Species:	Rabbit
Reactivity:	Human, Mouse, Rat
Applications:	WB, IHC, IF, ELISA
Isotype:	IgG, Kappa
MW:	53kDa (Calculated) 60kDa (Observed)

Recommended Dilution Ratios

IHC:	1:500-2000
WB:	1:2000-10000
IF:	1:200-1000
ELISA:	1:5000-20000

Storage

-15°C to -25°C/1 year (Do not lower than -25°C)

Basic Information

Clonality	Monoclonal
-----------	------------

Immunogen Information

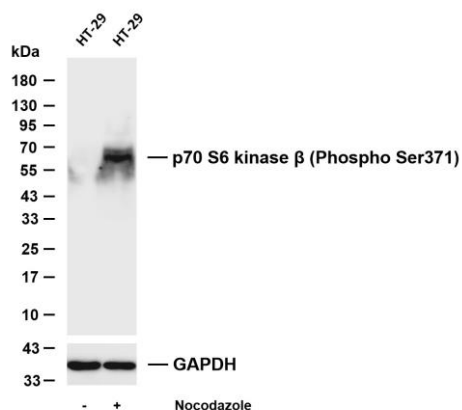
Specificity	Phospho-p70 S6 kinase β (S371) Antibody detects endogenous levels of p70 S6 kinase β protein only when phosphorylated at S371. The name of modified sites may be influenced by many factors, such as species (the modified site was not originally found in human samples) and the change of protein sequence (the previous protein sequence is incomplete, and the protein sequence may be prolonged with the development of protein sequencing technology). When naming, we will use the "numbers" in historical reference to keep the sites consistent with the reports. The antibody binds to the following modification sequence (lowercase letters are modification sites):DSpDD
-------------	--

Target Information

Gene name	RPS6KB2
-----------	---------

Protein Name	Ribosomal protein S6 kinase beta-2		
	Organism	Gene ID	UniProt ID
	Human	6199	Q9UBS0
	Mouse	58988	Q9Z1M4
Cellular Localization	Cytoplasm. Nucleus.		
Tissue specificity	Brain, Epithelium, Lymph		

Validation Data



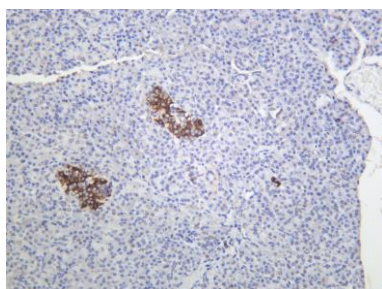
Various whole cell lysates were separated by 4-20% SDS-PAGE, and the membrane was blotted with anti-p70 S6 kinase β (Phospho Ser371) antibody. The HRP-conjugated Goat anti-Rabbit IgG (H + L) antibody was used to detect the antibody.

Lane 1: HT-29

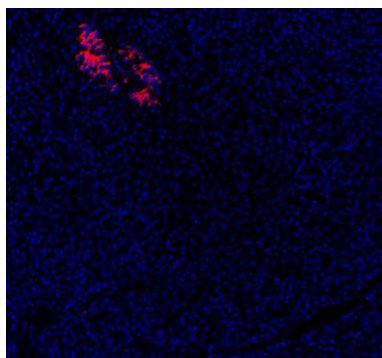
Lane 2: HT-29 was treated with Nocodazole(50ng/ml) for 48 hours

Predicted band size: 53kDa

Observed band size: 60kDa



Human pancreas was stained with anti-p70 S6 kinase β (Phospho Ser371) Rabbit antibody.



Immunofluorescence analysis of Human pancreas.