

## CDK12 (Phospho Thr14) Rabbit mAb (AR1877)

### Key Features

Host Species:	Rabbit
Reactivity:	Human,Mouse,Rat
Applications:	WB,IHC,IF,IP,ELISA
Isotype:	IgG,Kappa
MW:	34kDa (Calculated) 34kDa (Observed)

### Recommended Dilution Ratios

IHC:	1:200-1000
WB:	1:2000-10000
IF:	1:200-1000
ELISA:	1:5000-20000
IP:	1:50-200

### Storage

-15°C to -25°C/1 year (Do not lower than -25°C)

### Basic Information

Clonality	Monoclonal
-----------	------------

### Immunogen Information

Specificity	Phospho-Cdk1/2 (T14) Antibody detects endogenous levels of Cdk1/2 protein only when phosphorylated at T14. The name of modified sites may be influenced by many factors, such as species (the modified site was not originally found in human samples) and the change of protein sequence (the previous protein sequence is incomplete, and the protein sequence may be prolonged with the development of protein sequencing technology). When naming, we will use the "numbers" in historical reference to keep the sites consistent with the reports. The antibody binds to the following modification sequence (lowercase letters are modification sites): EGtYG
-------------	---

### Target Information

Gene name	CDK1/CDK2
Protein Name	Cyclin-dependent kinase 1/2

Organism	Gene ID	UniProt ID
Human	1017	P06493; P24941
Mouse	12534; 12566	
Rat	54237	P39951; Q63699

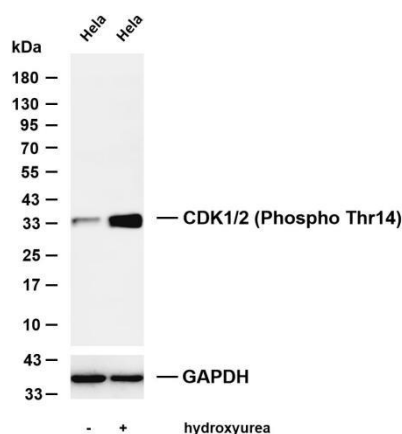
## Cellular Localization

Nucleus. Cytoplasm. Mitochondrion. Cytoplasm, cytoskeleton, microtubule organizing center, centrosome. Cytoplasm, cytoskeleton, spindle. Cytoplasmic during the interphase. Colocalizes with SIRT2 on centrosome during prophase and on spindle fibers during metaphase of the mitotic cell cycle. Reversibly translocated from cytoplasm to nucleus when phosphorylated before G2-M transition when associated with cyclin-B1. Accumulates in mitochondria in G2-arrested cells upon DNA-damage.

## Tissue specificity

Isoform 2 is found in breast cancer tissues.

## Validation Data



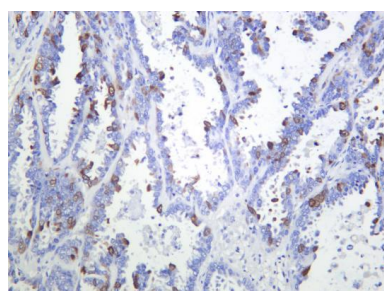
Various whole cell lysates were separated by 4-20% SDS-PAGE, and the membrane was blotted with anti-CDK1/2 (Phospho Thr14) antibody. The HRP-conjugated Goat anti-Rabbit IgG (H + L) antibody was used to detect the antibody.

Lane 1: HeLa

Lane 2: HeLa was treated with hydroxyurea for 16 hours

Predicted band size: 34kDa

Observed band size: 34kDa



Human colon was stained with anti-CDK1/2 (Phospho Thr14) Rabbit antibody.