

EGFR (Phospho Tyr1068) Rabbit mAb (AR1875)

Key Features

Host Species:	Rabbit
Reactivity:	Human, Mouse, Rat
Applications:	WB, IF, IP, ELISA
Isotype:	IgG, Kappa
MW:	134kDa (Calculated) 175kDa (Observed)

Recommended Dilution Ratios

WB:	1:2000-10000
IF:	1:200-1000
ELISA:	1:5000-20000
IP:	1:50-200

Storage

-15°C to -25°C/1 year (Do not lower than -25°C)

Basic Information

Clonality	Monoclonal
-----------	------------

Immunogen Information

Specificity	Phospho-EGFR (Y1068) Antibody detects endogenous levels of EGFR protein only when phosphorylated at Y1092. The name of modified sites may be influenced by many factors, such as species (the modified site was not originally found in human samples) and the change of protein sequence (the previous protein sequence is incomplete, and the protein sequence may be prolonged with the development of protein sequencing technology). When naming, we will use the "numbers" in historical reference to keep the sites consistent with the reports. The antibody binds to the following modification sequence (lowercase letters are modification sites): LQrYS
-------------	---

Target Information

Gene name	EGFR ERBB ERBB1 HER1
Protein Name	EGF Receptor (Tyr1068)

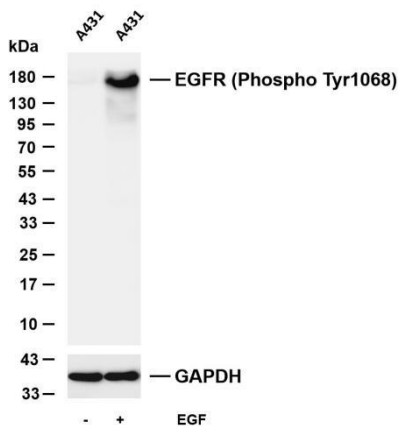
Organism	Gene ID	UniProt ID
Human	1956	P00533
Mouse	13649	Q01279

Cellular Localization

Tissue specificity

Cell membrane; Single-pass type I membrane protein. Endoplasmic reticulum membrane; Single-pass type I membrane protein. Golgi apparatus membrane; Single-pass type I membrane protein. Nucleus membrane; Single-pass type I membrane protein. Endosome. Endosome membrane. Nucleus. In response to EGF, translocated from the cell membrane to the nucleus via Golgi and ER (PubMed:20674546, PubMed:17909029). Endocytosed upon activation by ligand (PubMed:2790960, PubMed:17182860, PubMed:27153536, PubMed:17909029). Colocalized with GPER1 in the nucleus of estrogen agonist-induced cancer-associated fibroblasts (CAF) (PubMed:20551055). [Isoform 2]: Secreted. Ubiquitously expressed. Isoform 2 is also expressed in ovarian cancers.

Validation Data



Various whole cell lysates were separated by 4-20% SDS-PAGE, and the membrane was blotted with anti-EGFR (Phospho Tyr1068) antibody. The HRP-conjugated Goat anti-Rabbit IgG (H + L) antibody was used to detect the antibody.

Lane 1: A431

Lane 2: A431 was treated with EGF (100ng/ml) for 5 minutes

Predicted band size: 134kDa

Observed band size: 175kDa

For Research Use Only